

Elective Surgery

Hospital Quarterly:

Performance of
NSW public hospitals

April to June 2012

Elective, or planned, surgery is surgery that a patient's doctor considers necessary but that can be delayed by at least 24 hours. Hip replacement, cataract extraction and ligament repairs are examples of elective surgery.

Compared with the same quarter one year ago, a similar amount of elective surgery was conducted. Less surgery was performed in the urgent category (down 2%), and semi-urgent increased by 5%. The same amount of surgery was performed in the non-urgent category. Staged surgery decreased by 12% compared with last year.

Most patients (92%) continued to receive their surgery on time in NSW. Compared to the same quarter one year ago, the percentage of urgent,

semi-urgent and non-urgent patients receiving surgery on time remained largely unchanged at 94%, 91% and 91% respectively.

The median* waiting times for patients admitted for elective surgery have changed little since the same quarter in 2011 for urgent and semi-urgent surgical procedures (11 and 49 days respectively). The median waiting time for patients admitted for non-urgent procedures was 240 days, up by 17 days when compared with the same quarter one year ago.

This is one of three *Hospital Quarterly* modules. For the Emergency Departments and Admitted Patients modules visit www.bhi.nsw.gov.au

Find out how **your local** hospital

PERFORMS

Results for more than
80 NSW hospitals
available at

www.bhi.nsw.gov.au

During the quarter	Apr-Jun 2012	Apr-Jun 2011	The difference
Elective surgical procedures performed	50,538 procedures	50,434 procedures	unchanged
'Staged procedures' (including non-urgent cystoscopies)	3,289 staged	3,734 staged	-445 (-12%)
Elective surgery patients treated on time	92% on time	92% on time	unchanged
Urgent elective surgery patients treated on time	94% on time	93% on time	+1 percentage point
Semi-urgent elective surgery patients treated on time	91% on time	91% on time	unchanged
Non-urgent elective surgery patients treated on time	91% on time	92% on time	-1 percentage point
Median* waiting time for non-urgent surgery	240 days	223 days	+17 (+8%)

* Median waiting time: time by which half of patients received surgery. The other half of patients took equal to or longer than this time.

Our approach to elective surgery reporting

If a person and their surgeon believe surgery is required but can be delayed by at least 24 hours, the patient is *'referred'* for their procedure and placed on a waiting list.

At the time of referral, a patient's surgeon assigns them to one of three urgency categories. Each category has its own target, which specifies the desired maximum time (in days) the patient should wait for their procedure. These are outlined in the box below:

Urgency categories: Elective surgery guidelines	
Category 1 Urgent	Admission within 30 days desirable for a condition that has the potential to deteriorate quickly and become an emergency
Category 2 Semi-urgent	Admission within 90 days desirable for a condition not likely to deteriorate quickly
Category 3 Non-urgent	Admission within 365 days acceptable for a condition unlikely to deteriorate quickly

Explaining staged procedures

There are times when surgery is deemed necessary but should not, or cannot, take place until a clinically appropriate time interval has passed. This is called staged surgery and is an essential concept in managing elective surgery. It allows surgeons to place patients on the surgery booking system but prevents them from being admitted to hospital before it is clinically appropriate.

Surgeons use clinical judgement to decide whether a procedure should be categorised as staged or not.

Examples of staged procedures include: waiting for a broken bone to heal before removing pins or plates; the time needed for hormone therapy to work before egg harvesting takes place during in-vitro fertilisation (IVF); and certain invasive diagnostic procedures (such as cystoscopy) that sometimes need to be conducted at set intervals.

Differences across hospitals

Because patients cannot, or should not, have their staged procedure before the prescribed date, they are not considered to be *'waiting for care'* unless they wait beyond that date. For this reason, the Bureau has excluded staged procedures from on-time surgery performance and median waiting time in this report.

In addition, there are differences in how hospitals manage cystoscopy procedures in the booking systems. Because including these patients may result in unfair or inequitable comparisons, the Bureau also excludes all non-urgent cystoscopy procedures from performance measures.

The Bureau is committed to providing clarity on surgical waiting times in NSW. Further detail on our methods can be found in the Bureau's *Hospital Quarterly Technical Supplement: Elective surgery measures, April to June 2012* available on the Bureau's website at www.bhi.nsw.gov.au

See the **Appendices** section of this report (pages 8 to 19) for more detailed performance information about each public hospital providing elective surgery in NSW. This includes Hawkesbury Private Hospital, which is contracted to supply surgery for public patients.

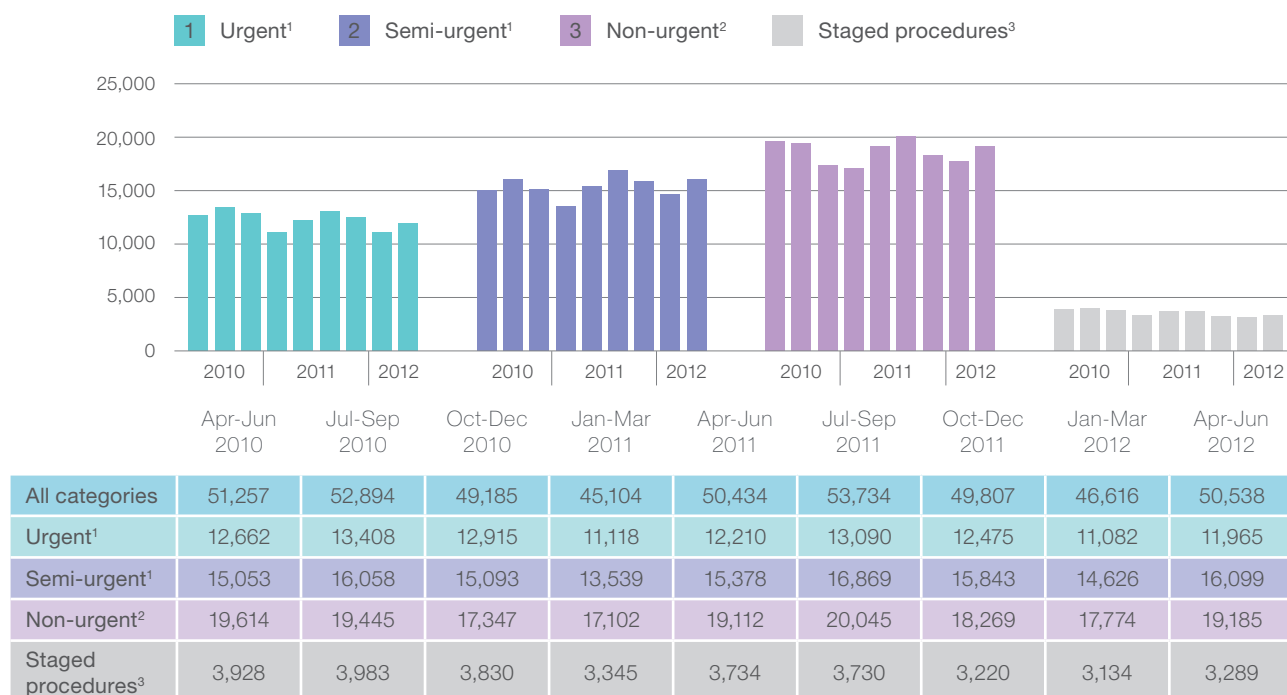
Number of elective surgery procedures performed

Note: Due to a major upgrade to the information system at The Children's Hospital at Westmead (CHW) during the April to June 2012 quarter, the data are not considered reliable enough to report. Results from CHW have also been excluded from NSW current and previous quarters to enable comparisons over time. This hospital accounts for approximately 3% of elective surgery activity but its removal does not have a large effect on waiting times for NSW. Further detail about this analysis can be found in the Bureau's *Hospital Quarterly Technical Supplement: Elective surgery measures, April to June 2012*, available at www.bhi.nsw.gov.au

During April to June 2012, the Waiting List Collection On-line System (WLCOS) recorded that 50,538 patients were admitted from the waiting list to receive an elective surgery procedure in NSW public hospitals or facilities contracted by NSW hospitals. This is 8% higher than the 46,616 conducted in the previous quarter (in line with the usual seasonal pattern) but similar to the 50,434 surgical procedures completed in the same quarter last year (Figure 1).

In this report, results and figures exclude staged patients and non-urgent cystoscopy, unless otherwise stated.

Figure 1: Total number of elective surgery procedures conducted, by urgency category, April 2010 to June 2012



1. Excluding staged procedures.
2. Excluding staged procedures and non-urgent cystoscopy.
3. Including non-urgent cystoscopy.

Note: Because of changes in methods and reporting, numbers of surgical procedures by urgency category will differ from those reported in previous NSW Ministry of Health's *Quarterly Hospital Performance Reports* and Bureau *Hospital Quarterly* reports published prior to May 2011.

Source: Waiting List Collection On-line System, NSW Health. Data extracted for July to September 2011, October to December 2011, January to March 2012 and April to June 2012 on 20 July 2012. Data extracted for all previous quarters on 15 July 2011.

Only one procedure is recorded in the waiting list and counted in this report for each admission, although some patients have more than one procedure during a single admission. A patient can be admitted more than once in a quarter for elective procedures and each admission is counted.

Urgent surgery: There were 11,965 procedures completed, down 2% compared with one year ago. Urgent procedures made up 24% of all completed elective surgery.

Semi-urgent surgery: There were 16,099 procedures completed, up 5% compared with one year ago. Semi-urgent procedures made up 32% of all completed elective surgery.

Non-urgent surgery: There were 19,185 procedures completed, up less than 1% compared with one year ago. Non-urgent procedures made up 38% of all completed elective surgery.

Staged surgery: There were 3,289 procedures, down 12% compared with one year ago. Staged procedures made up 7% of all completed elective surgery.

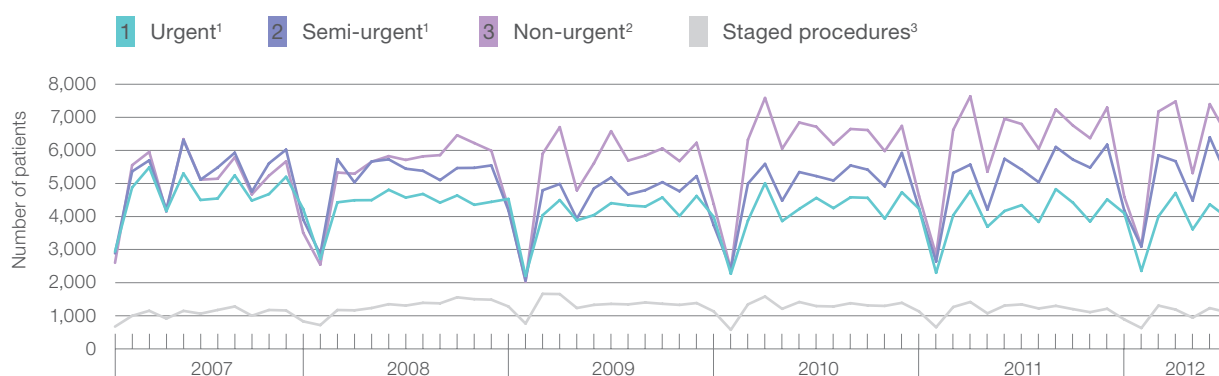
Change over five years

The composition of surgical procedures completed by urgency category has changed over the past five years (Figure 2). Most of this shift in surgical composition occurred during 2008 and early 2009.

Comparing the proportions that the surgical categories make up of all completed procedures, urgent surgery has decreased from 28% of all surgical procedures in May 2007 to 23% in May 2012.

Over the same period, non-urgent procedures have increased from 33% of all surgical procedures to 38%.

Figure 2: Patients who received elective surgery, by urgency category, by month, January 2007 to June 2012



1. Excluding staged procedures.
2. Excluding staged procedures and non-urgent cystoscopy.
3. Including non-urgent cystoscopy.

Note: Because of changes in methods and reporting, numbers of surgical procedures by urgency category will differ from those reported in previous NSW Ministry of Health's *Quarterly Hospital Performance Reports* and *Bureau Hospital Quarterly reports* published prior to May 2011.

Source: Waiting List Collection On-line System, NSW Health. Data extracted for July to September 2011, October to December 2011, January to March 2012 and April to June 2012 on 20 July 2012. Data extracted for all previous quarters on 15 July 2011.

Patients admitted on time for elective surgery

In the April to June 2012 quarter, 92% of all patients who were admitted to a public hospital for elective surgery were admitted within the time frame recommended by their surgeon (Figure 3), similar to the preceding quarter (90%) and the same quarter in 2011 (92%).

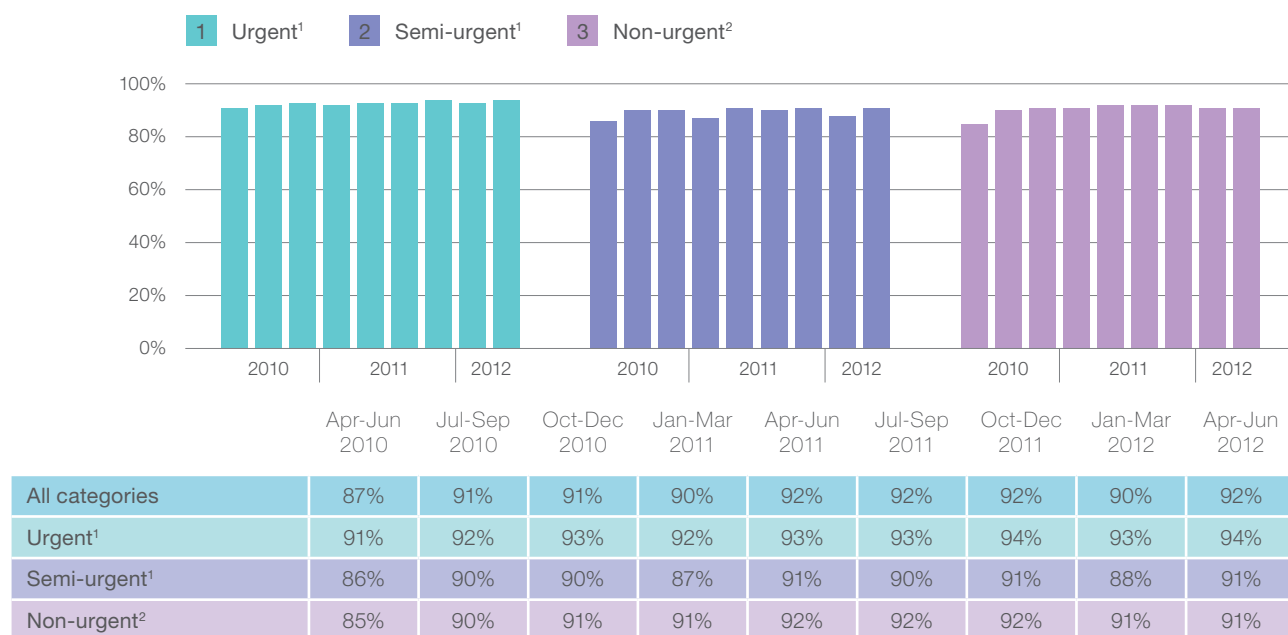
Figure 3 presents the percentage of patients in each surgical category who received their surgery on time for the most recent nine quarters. These results exclude staged patients and non-urgent cystoscopy procedures.

Urgent surgery: 94% of patients were admitted within the recommended 30 days, up one percentage point compared with the last quarter and the same quarter in 2011.

Semi-urgent surgery: 91% of patients were admitted within 90 days, up three percentage points compared with the last quarter but similar to the same quarter in 2011.

Non-urgent surgery: 91% of patients were admitted within 365 days, similar to the last quarter but down one percentage point compared with the same quarter in 2011.

Figure 3: Percentage of elective surgery patients treated within recommended waiting time, by urgency category, April 2010 to June 2012



1. Excluding staged procedures.

2. Excluding staged procedures and non-urgent cystoscopy.

Note: Because of changes in methods and reporting, numbers of surgical procedures by urgency category will differ from those reported in previous NSW Ministry of Health's *Quarterly Hospital Performance Reports* and Bureau Hospital *Quarterly* reports published prior to May 2011.

Source: Waiting List Collection On-line System, NSW Health. Data extracted for July to September 2011, October to December 2011, January to March 2012 and April to June 2012 on 20 July 2012. Data extracted for all previous quarters on 15 July 2011.

Median waiting times for elective surgery

Median wait time is the number of days within which half of patients received surgery. The other half took equal to or longer than the median.

Figure 4 presents the median waiting time to be admitted for surgery for the current quarter and the eight quarters prior to this. These results exclude staged patients and non-urgent cystoscopy procedures.

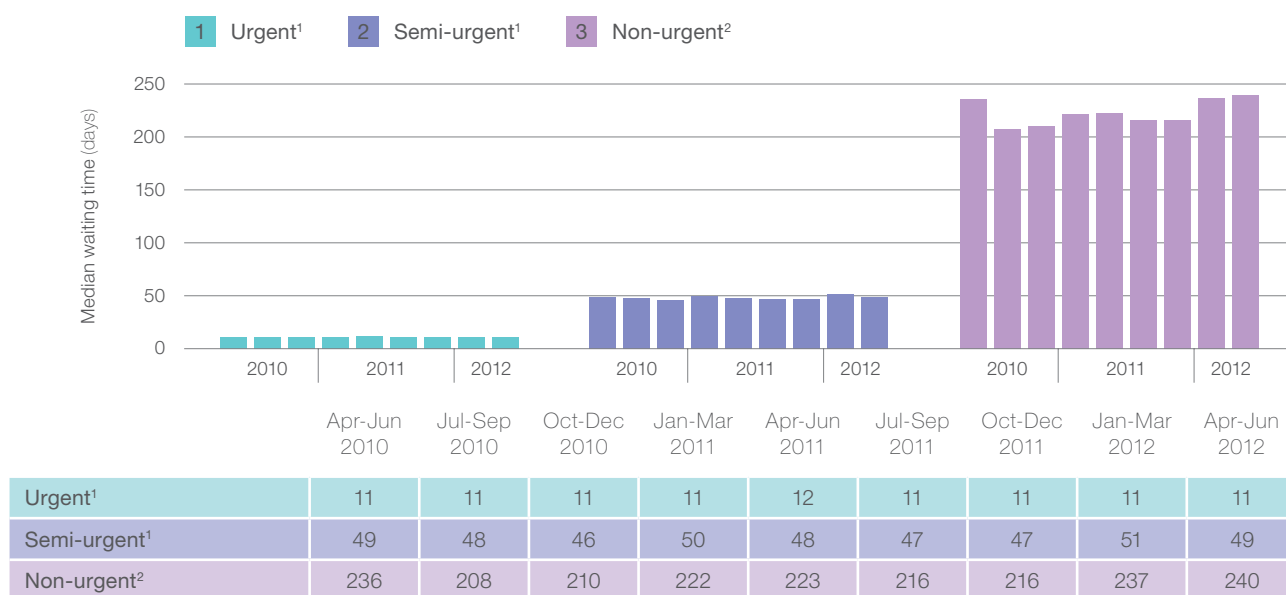
Urgent surgery: The median wait was 11 days – largely unchanged over the past two years, when the median wait time ranged from 11 to 12 days.

Semi-urgent surgery: The median wait time for this category was 49 days, one day more than the same quarter in 2011 but similar to the same quarter in 2010 (49 days).

Non-urgent surgery: The median wait time for this category was 240 days, 17 days more than the same quarter in 2011 (223 days).

In part due to the longer wait times, non-urgent median waiting times appear as the most volatile of the three urgency categories. Over the past nine quarters, non-urgent procedure wait times have ranged from 208 days in July to September 2010 to 240 this quarter.

Figure 4: NSW elective surgery median waiting time (days), by urgency category, April 2010 to June 2012



1. Excluding staged procedures.

2. Excluding staged procedures and non-urgent cystoscopy.

Note: Patients recorded as 'deferred' when they received their surgery are allocated to 'ready for care' urgency categories as appropriate.

Note: Because of changes in methods and reporting, numbers of surgical procedures by urgency category will differ from those reported in previous NSW Ministry of Health's *Quarterly Hospital Performance Reports* and Bureau Hospital *Quarterly* reports published prior to May 2011.

Source: Waiting List Collection On-line System, NSW Health. Data extracted for July to September 2011, October to December 2011, January to March 2012 and April to June 2012 on 20 July 2012. Data extracted for all previous quarters on 15 July 2011.

Cumulative wait time

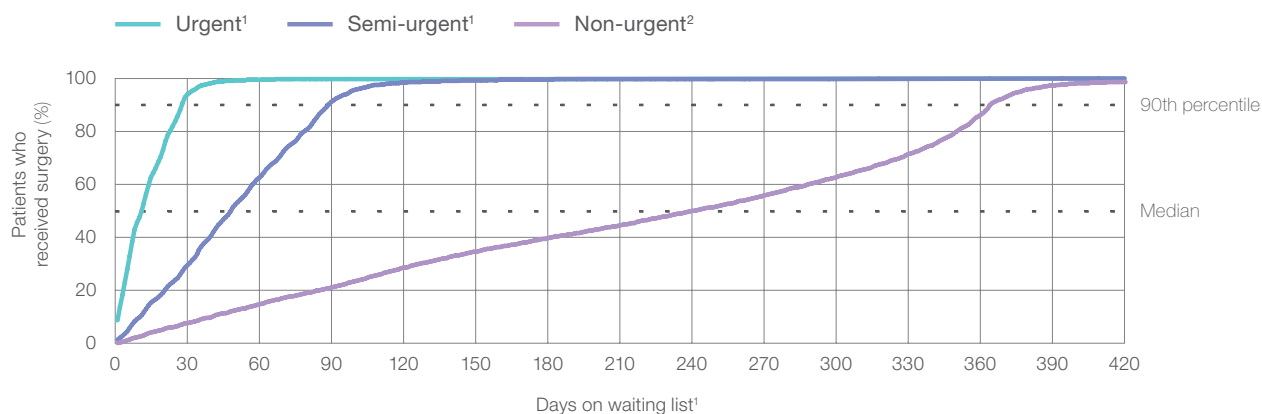
Greater detail on how long people waited to be admitted for their elective surgery during April to June 2012 is presented in [Figure 5](#).

The graph's slopes indicate the rate at which patients were admitted for surgery. A steep slope indicates a high rate of completion of patients'

surgery over the period shown. A flat slope shows a lower rate of completion of patients' surgery over the period.

Urgent patients have the most rapid rate of admission and almost all patients are admitted for surgery within 45 days. Non-urgent patients are admitted at a slower rate with almost all patients admitted within 420 days.

Figure 5: Cumulative percentage of patients who received elective surgery, by waiting time (days), April to June 2012



1. Excluding staged procedures.

2. Excluding staged procedures and non-urgent cystoscopy.

Note: Excludes the total number of days the patient was coded as '*not ready for care*'.

Source: Waiting List Collection On-line System, NSW Health. Data extracted on 20 July 2012.

Small number suppression

Some hospitals conduct few surgical procedures. Small numbers in any urgency group need to be treated cautiously to protect patients' identities. The Bureau suppresses information based on very few patients. If there are fewer than 10 patients in any group, patient numbers or percentages are replaced by a symbol, which refers to footnotes about small number suppression. The Bureau may use its discretion to suppress the next smallest values, or results for an entire hospital with few patients, if there is a risk of disclosing patients' identities. Because the staged procedure category is excluded from performance measure calculations, low counts in this group are not automatically suppressed ([Appendix table 1](#)).

Appendix: Activity and performance data tables at hospital and local health district level

The following table presents the number of elective surgery admissions, by urgency category, for major hospitals in NSW. The table is ordered by local health district and includes all principal referral, paediatric specialist, ungrouped acute – tertiary referral, major metropolitan, major non-metropolitan,

and district groups 1 and 2 hospitals that conduct elective surgery. These hospitals account for 98% of all elective surgery recorded as complete in the NSW booking system. Surgery information from smaller hospitals is presented for each local health district under the ‘*other*’ category.

Appendix table 1: NSW elective surgery activity, by hospital and local health district, April to June 2012

Number of elective surgical procedures					
	All categories	Urgent ¹	Semi-urgent ¹	Non-urgent ²	Staged procedures ³
New South Wales					
Total New South Wales	50,538	11,965	16,099	19,185	3,289
Central Coast Local Health District (CCLHD)					
Gosford Hospital	1,491	321	492	531	147
Wyong Hospital	830	116	341	333	40
Total CCLHD	2,321	437	833	864	187
Far West Local Health District (FWLHD)					
Broken Hill Base Hospital	276	59	94	100	23
Total FWLHD	276	59	94	100	23
Hunter New England Local Health District (HNELHD)					
Armidale and New England Hospital	288	54	106	124	4
Belmont Hospital	583	90	235	222	36
Calvary Mater Newcastle	297	157	108	21	11
Cessnock District Hospital	389	96	195	88	10
Gunnedah District Hospital	99	37	34	28	0
Inverell District Hospital	58	13	18	24	3
John Hunter Hospital	2,128	651	689	679	109
Kurri Kurri District Hospital	452	43	91	313	5
Maitland Hospital	709	171	270	246	22
Manning Base Hospital	695	90	235	332	38
Moree District Hospital	106	29	16	59	2
Muswellbrook District Hospital	106	11	32	62	1
Narrabri District Hospital	57	22	31	*	*
Singleton District Hospital	102	12	29	60	1
Tamworth Base Hospital	908	146	338	327	97
Other HNELHD	234	29	75	128	2
Total HNELHD	7,211	1,651	2,502	2,713	341

Number of elective surgical procedures

	All categories	Urgent ¹	Semi-urgent ¹	Non-urgent ²	Staged procedures ³
Illawarra Shoalhaven Local Health District (ISLHD)					
Bulli District Hospital	115	30	30	55	0
Milton and Ulladulla Hospital	35	14	*	18	*
Shellharbour Hospital	736	53	201	479	3
Shoalhaven and District Memorial Hospital	706	159	177	320	50
Wollongong Hospital	1,431	523	289	285	334
Total ISLHD	3,023	779	697	1,157	387
Mid North Coast Local Health District (MNCLHD)					
Bellinger River District Hospital	56	*	23	29	*
Coffs Harbour Base Hospital	916	177	222	428	89
Kempsey Hospital	204	*	34	161	*
Macksville District Hospital	73	*	18	50	*
Port Macquarie Base Hospital	755	192	250	233	80
Other MNCLHD	179	13	34	72	60
Total MNCLHD	2,183	382	581	973	229
Murrumbidgee Local Health District (MLHD)					
Deniliquin Health Service	60	17	32	11	0
Griffith Base Hospital	278	50	89	122	17
Tumut Health Service	70	*	25	37	*
Wagga Wagga Base Hospital	1,188	244	367	555	22
Young Health Service	77	*	34	*	20
Other MLHD	85	25	39	20	1
Total MLHD	1,758	336	586	745	60
Nepean Blue Mountains Local Health District (NBMLHD)					
Blue Mountains District Anzac Memorial Hospital	97	10	55	32	0
Hawkesbury District Health Service	374	61	120	182	11
Lithgow Health Service	158	*	55	86	*
Nepean Hospital	1,460	431	443	550	36
Other NBMLHD	204	*	56	130	*
Total NBMLHD	2,293	502	729	980	47
Northern NSW Local Health District (NNSWLHD)					
Ballina District Hospital	186	35	90	51	10
Casino and District Memorial Hospital	227	28	68	115	16
Grafton Base Hospital	432	159	146	101	26
Lismore Base Hospital	1,204	344	362	410	88
Maclean District Hospital	56	31	*	17	*
Murwillumbah District Hospital	434	60	129	193	52
The Tweed Hospital	764	180	256	182	146
Total NNSWLHD	3,303	837	1,051	1,069	338

Number of elective surgical procedures

	All categories	Urgent ¹	Semi-urgent ¹	Non-urgent ²	Staged procedures ³
Northern Sydney Local Health District (NSLHD)					
Hornsby and Ku-Ring-Gai Hospital	541	94	177	247	23
Manly District Hospital	326	73	118	110	25
Mona Vale and District Hospital	392	68	85	213	26
Royal North Shore Hospital	1,455	492	457	486	20
Ryde Hospital	399	54	160	182	3
Total NSLHD	3,113	781	997	1,238	97
South Eastern Sydney Local Health District (SESLHD)					
Prince of Wales Hospital	1,293	356	583	322	32
Royal Hospital for Women	425	148	187	90	0
St George Hospital	945	453	269	196	27
Sutherland Hospital	620	140	202	255	23
Sydney Hospital / Sydney Eye Hospital	1,220	214	305	701	0
Total SESLHD	4,503	1,311	1,546	1,564	82
South Western Sydney Local Health District (SWSLHD)					
Bankstown / Lidcombe Hospital	1,338	192	379	614	153
Bowral and District Hospital	300	65	61	166	8
Campbelltown Hospital	1,196	132	378	529	157
Fairfield Hospital	610	52	109	425	24
Liverpool Hospital	1,872	661	627	537	47
Total SWSLHD	5,316	1,102	1,554	2,271	389
Southern NSW Local Health District (SNSWLHD)					
Bateman's Bay District Hospital	277	*	38	231	*
Bega District Hospital	291	70	62	155	4
Cooma Health Service	94	17	26	51	0
Goulburn Base Hospital	293	68	84	140	1
Moruya District Hospital	159	35	55	68	1
Queanbeyan Health Service	230	24	128	74	4
Other SNSWLHD	39	14	*	18	*
Total SNSWLHD	1,383	228	393	737	10
St Vincent's Health Network (SVHN)					
St Vincent's Hospital, Darlinghurst	864	383	232	215	34
Total SVHN	864	383	232	215	34
Sydney Children's Hospitals Network (SCHN)					
Sydney Children's Hospital	748	175	247	319	7
The Children's Hospital at Westmead	†	†	†	†	†
Total SCHN	748	175	247	319	7

Number of elective surgical procedures

	All categories	Urgent ¹	Semi-urgent ¹	Non-urgent ²	Staged procedures ³
Sydney Local Health District (SYDLHD)					
Canterbury Hospital	665	95	261	254	55
Concord Hospital	2,129	405	504	828	392
RPAH Institute of Rheumatology and Orthopaedics	419	30	49	340	0
Royal Prince Alfred Hospital	3,017	1,046	1,053	640	278
Total SYDLHD	6,230	1,576	1,867	2,062	725
Western NSW Local Health District (WNSWLHD)					
Bathurst Base Hospital	376	86	125	133	32
Cowra District Hospital	131	17	44	70	0
Dubbo Base Hospital	820	140	239	367	74
Forbes District Hospital	132	10	31	91	0
Mudgee District Hospital	137	19	46	68	4
Orange Base Hospital	753	127	222	351	53
Parkes District Hospital	78	20	50	*	*
Other WNSWLHD	47	*	*	36	0
Total WNSWLHD	2,474	419	757	1,116	163
Western Sydney Local Health District (WSLHD)					
Auburn Hospital	754	128	277	345	4
Blacktown Hospital	708	118	333	232	25
Mount Druitt Hospital	487	50	240	189	8
Westmead Hospital (all units)	1,590	662	560	268	100
Total WSLHD	3,539	958	1,410	1,034	137

1. Excluding staged procedures.

2. Excluding staged procedures and non-urgent cystoscopy.

3. Including non-urgent cystoscopy.

(*) Values suppressed due to small numbers and to protect privacy. Suppressed data have been excluded from local health district totals.

(†) Due to a major upgrade to the hospital's information system during the April to June 2012 quarter, the data are not considered reliable enough to report.

Note: All urgency categories include deferred patients as appropriate.

Note: Because staged patients are now reported separately, numbers of surgical procedures by urgency category for this quarter are not comparable to data reported in previous NSW Ministry of Health's *Quarterly Hospital Performance Reports* and Bureau *Hospital Quarterly* reports prior to May 2011.

Source: Waiting List Collection On-line System, NSW Health. Data extracted on 20 July 2012.

The following table presents the percentages of elective surgery admissions within the clinically recommended time for each urgency category for April to June 2012. The table is ordered by local health district and includes all principal referral, paediatric specialist,

ungrouped acute – tertiary referral, major metropolitan, major non-metropolitan and district groups 1 and 2 hospitals that conduct elective surgery. Surgery information from smaller hospitals is presented for each local health district under the ‘*other*’ category.

Appendix table 2: NSW on-time elective surgery performance, by hospital and local health district, April to June 2012

Percentage of patients treated on time				
	All categories ¹	Urgent ¹	Semi-urgent ¹	Non-urgent ²
New South Wales				
Total New South Wales	92	94	91	91
Central Coast Local Health District (CCLHD)				
Gosford Hospital	84	92	80	82
Wyong Hospital	91	91	91	91
Total CCLHD	86	92	85	86
Far West Local Health District (FWLHD)				
Broken Hill Base Hospital	96	97	90	100
Total FWLHD	96	97	90	100
Hunter New England Local Health District (HNELHD)				
Armidale and New England Hospital	100	100	99	100
Belmont Hospital	99	100	99	100
Calvary Mater Newcastle	79	76	79	100
Cessnock District Hospital	94	92	94	98
Gunnedah District Hospital	96	89	100	100
Inverell District Hospital	87	100	89	79
John Hunter Hospital	88	92	86	86
Kurri Kurri District Hospital	96	100	100	95
Maitland Hospital	96	97	95	96
Manning Base Hospital	96	100	97	94
Moree District Hospital	100	100	100	100
Muswellbrook District Hospital	99	100	97	100
Narrabri District Hospital	100	100	100	*
Singleton District Hospital	100	100	100	100
Tamworth Base Hospital	82	90	75	84
Other HNELHD	98	100	100	96
Total HNELHD	92	93	90	92

Percentage of patients treated on time

	All categories ¹	Urgent ¹	Semi-urgent ¹	Non-urgent ²
Illawarra Shoalhaven Local Health District (ISLHD)				
Bulli District Hospital	100	100	100	100
Milton and Ulladulla Hospital	97	93	*	100
Shellharbour Hospital	99	100	98	100
Shoalhaven and District Memorial Hospital	89	88	81	93
Wollongong Hospital	91	97	89	84
Total ISLHD	93	96	90	94
Mid North Coast Local Health District (MNCLHD)				
Bellinger River District Hospital	98	*	96	100
Coffs Harbour Base Hospital	83	74	89	84
Kempsey Hospital	95	*	88	96
Macksville District Hospital	89	*	100	86
Port Macquarie Base Hospital	80	78	79	82
Other MNCLHD	90	92	68	100
Total MNCLHD	84	77	84	87
Murrumbidgee Local Health District (MLHD)				
Deniliquin Health Service	100	100	100	100
Griffith Base Hospital	83	98	96	68
Tumut Health Service	94	*	84	100
Wagga Wagga Base Hospital	93	96	95	91
Young Health Service	96	*	94	100
Other MLHD	99	100	97	100
Total MLHD	93	97	95	89
Nepean Blue Mountains Local Health District (NBMLHD)				
Blue Mountains District Anzac Memorial Hospital	98	100	96	100
Hawkesbury District Health Service	50	75	53	39
Lithgow Health Service	100	*	100	100
Nepean Hospital	81	99	80	68
Other NBMLHD	95	*	93	95
Total NBMLHD	79	96	79	70
Northern NSW Local Health District (NNSWLHD)				
Ballina District Hospital	99	100	99	100
Casino and District Memorial Hospital	100	100	100	100
Grafton Base Hospital	90	97	84	85
Lismore Base Hospital	92	97	90	90
Maclean District Hospital	100	100	*	100
Murwillumbah District Hospital	95	95	94	96
The Tweed Hospital	91	97	85	92
Total NNSWLHD	93	97	90	93

Percentage of patients treated on time

All categories ¹	Urgent ¹	Semi-urgent ¹	Non-urgent ²
-----------------------------	---------------------	--------------------------	-------------------------

Northern Sydney Local Health District (NSLHD)				
Hornsby and Ku-Ring-Gai Hospital	95	95	97	94
Manly District Hospital	100	100	100	100
Mona Vale and District Hospital	100	100	100	100
Royal North Shore Hospital	92	93	91	91
Ryde Hospital	96	93	93	99
Total NSLHD	95	94	94	95

South Eastern Sydney Local Health District (SESLHD)				
Prince of Wales Hospital	91	92	92	87
Royal Hospital for Women	99	99	99	99
St George Hospital	79	85	74	70
Sutherland Hospital	93	86	92	98
Sydney Hospital / Sydney Eye Hospital	97	100	97	96
Total SESLHD	91	91	91	92

South Western Sydney Local Health District (SWSLHD)				
Bankstown / Lidcombe Hospital	89	85	91	90
Bowral and District Hospital	100	100	100	100
Campbelltown Hospital	83	88	86	79
Fairfield Hospital	99	96	99	100
Liverpool Hospital	91	91	91	90
Total SWSLHD	90	90	91	90

Southern NSW Local Health District (SNSWLHD)				
Bateman's Bay District Hospital	85	*	100	82
Bega District Hospital	91	87	90	94
Cooma Health Service	99	100	96	100
Goulburn Base Hospital	92	96	98	86
Moruya District Hospital	96	89	96	100
Queanbeyan Health Service	99	100	98	100
Other SNSWLHD	95	100	*	89
Total SNSWLHD	93	93	97	90

St Vincent's Health Network (SVHN)				
St Vincent's Hospital, Darlinghurst	93	96	93	86
Total SVHN	93	96	93	86

Sydney Children's Hospitals Network (SCHN)				
Sydney Children's Hospital	97	99	96	97
The Children's Hospital at Westmead	†	†	†	†
Total SCHN	97	99	96	97

Percentage of patients treated on time

	All categories ¹	Urgent ¹	Semi-urgent ¹	Non-urgent ²
Sydney Local Health District (SYDLHD)				
Canterbury Hospital	96	100	95	96
Concord Hospital	99	100	100	99
RPAH Institute of Rheumatology and Orthopaedics	100	93	100	100
Royal Prince Alfred Hospital	98	98	99	97
Total SYDLHD	98	98	99	98
Western NSW Local Health District (WNSWLHD)				
Bathurst Base Hospital	98	97	98	98
Cowra District Hospital	100	100	100	100
Dubbo Base Hospital	90	94	87	90
Forbes District Hospital	100	100	100	100
Mudgee District Hospital	98	100	98	99
Orange Base Hospital	82	100	88	72
Parkes District Hospital	100	100	100	*
Other WNSWLHD	98	*	*	100
Total WNSWLHD	91	97	92	88
Western Sydney Local Health District (WSLHD)				
Auburn Hospital	90	88	84	96
Blacktown Hospital	97	97	96	99
Mount Druitt Hospital	94	96	96	90
Westmead Hospital (all units)	94	98	89	92
Total WSLHD	94	97	91	95

1. Excluding staged procedures.

2. Excluding staged procedures and non-urgent cystoscopy.

(*) Values suppressed due to small numbers and to protect privacy.

(†) Due to a major upgrade to the hospital's information system during the April to June 2012 quarter, the data are not considered reliable enough to report.

Note: All urgency categories include deferred patients as appropriate.

Note: Because staged patients are now reported separately, on-time performance by urgency category for this quarter are not comparable to data reported in previous NSW Ministry of Health's *Quarterly Hospital Performance Reports* and *Bureau Hospital Quarterly* reports prior to May 2011.

Source: Waiting List Collection On-line System, NSW Health. Data extracted on 20 July 2012.

The following table presents the median waiting times (in days) of elective surgery admissions for each urgency category for this quarter. The table is ordered by local health district and includes all principal referral, paediatric specialist, ungrouped acute – tertiary referral,

major metropolitan, major non-metropolitan and district groups 1 and 2 hospitals that conduct elective surgery. Surgery information from smaller hospitals is presented for each local health district under the ‘other’ category.

Appendix table 3: NSW median elective surgery waiting time performance, by hospital and local health district, April to June 2012

	Median waiting time (days)		
	Urgent ¹	Semi-urgent ¹	Non-urgent ²
New South Wales			
Total New South Wales	11	49	240
Central Coast Local Health District (CCLHD)			
Gosford Hospital	19	69	333
Wyong Hospital	18	41	290
Total CCLHD	18	53	315
Far West Local Health District (FWLHD)			
Broken Hill Base Hospital	17	49	139
Total FWLHD	17	49	139
Hunter New England Local Health District (HNELHD)			
Armidale and New England Hospital	21	54	283
Belmont Hospital	14	43	205
Calvary Mater Newcastle	22	56	280
Cessnock District Hospital	15	22	67
Gunnedah District Hospital	18	51	117
Inverell District Hospital	14	77	361
John Hunter Hospital	10	53	285
Kurri Kurri District Hospital	9	4	276
Maitland Hospital	10	29	237
Manning Base Hospital	18	66	286
Moree District Hospital	9	14	270
Muswellbrook District Hospital	8	18	11
Narrabri District Hospital	6	20	*
Singleton District Hospital	7	23	40
Tamworth Base Hospital	14	79	335
Other HNELHD	14	34	109
Total HNELHD	13	48	253

Median waiting time (days)

Urgent ¹	Semi-urgent ¹	Non-urgent ²
---------------------	--------------------------	-------------------------

Illawarra Shoalhaven Local Health District (ISLHD)			
Bulli District Hospital	9	43	190
Milton and Ulladulla Hospital	6	*	94
Shellharbour Hospital	21	56	232
Shoalhaven and District Memorial Hospital	15	77	274
Wollongong Hospital	6	66	336
Total ISLHD	8	62	264

Mid North Coast Local Health District (MNCLHD)			
Bellinger River District Hospital	*	31	108
Coffs Harbour Base Hospital	22	57	329
Kempsey Hospital	*	72	264
Macksville District Hospital	*	52	342
Port Macquarie Base Hospital	19	73	343
Other MNCLHD	19	73	238
Total MNCLHD	20	64	314

Murrumbidgee Local Health District (MLHD)			
Deniliquin Health Service	14	42	161
Griffith Base Hospital	23	68	357
Tumut Health Service	*	62	55
Wagga Wagga Base Hospital	17	51	309
Young Health Service	*	63	96
Other MLHD	12	48	49
Total MLHD	16	54	304

Nepean Blue Mountains Local Health District (NBMLHD)			
Blue Mountains District Anzac Memorial Hospital	5	41	31
Hawkesbury District Health Service	23	89	394
Lithgow Health Service	*	50	226
Nepean Hospital	10	68	345
Other NBMLHD	*	42	245
Total NBMLHD	11	62	328

Northern NSW Local Health District (NNSWLHD)			
Ballina District Hospital	18	42	91
Casino and District Memorial Hospital	6	30	64
Grafton Base Hospital	15	38	243
Lismore Base Hospital	8	52	324
Macleay District Hospital	8	*	31
Murwillumbah District Hospital	14	56	336
The Tweed Hospital	16	63	239
Total NNSWLHD	12	51	290

Median waiting time (days)

Urgent ¹	Semi-urgent ¹	Non-urgent ²
---------------------	--------------------------	-------------------------

Northern Sydney Local Health District (NSLHD)			
Hornsby and Ku-Ring-Gai Hospital	8	34	130
Manly District Hospital	6	30	96
Mona Vale and District Hospital	5	16	72
Royal North Shore Hospital	10	49	152
Ryde Hospital	14	43	138
Total NSLHD	8	39	129
South Eastern Sydney Local Health District (SESLHD)			
Prince of Wales Hospital	13	41	300
Royal Hospital for Women	9	34	95
St George Hospital	13	63	322
Sutherland Hospital	20	63	286
Sydney Hospital / Sydney Eye Hospital	12	49	185
Total SESLHD	13	49	219
South Western Sydney Local Health District (SWSLHD)			
Bankstown / Lidcombe Hospital	16	51	220
Bowral and District Hospital	18	48	136
Campbelltown Hospital	20	70	328
Fairfield Hospital	11	43	243
Liverpool Hospital	12	50	278
Total SWSLHD	14	56	266
Southern NSW Local Health District (SNSWLHD)			
Bateman's Bay District Hospital	*	53	347
Bega District Hospital	18	73	295
Cooma Health Service	7	43	131
Goulburn Base Hospital	17	49	313
Moruya District Hospital	14	68	124
Queanbeyan Health Service	16	54	133
Other SNSWLHD	7	*	103
Total SNSWLHD	14	57	296
St Vincent's Health Network (SVHN)			
St Vincent's Hospital, Darlinghurst	5	47	144
Total SVHN	5	47	144
Sydney Children's Hospitals Network (SCHN)			
Sydney Children's Hospital	5	32	172
The Children's Hospital at Westmead	†	†	†
Total SCHN	5	32	172

Median waiting time (days)

Urgent ¹	Semi-urgent ¹	Non-urgent ²
---------------------	--------------------------	-------------------------

Sydney Local Health District (SYDLHD)			
Canterbury Hospital	13	57	286
Concord Hospital	8	44	122
RPAH Institute of Rheumatology and Orthopaedics	4	30	42
Royal Prince Alfred Hospital	7	18	34
Total SYDLHD	7	30	81

Western NSW Local Health District (WNSWLHD)			
Bathurst Base Hospital	12	60	255
Cowra District Hospital	8	39	193
Dubbo Base Hospital	8	37	280
Forbes District Hospital	8	25	279
Mudgee District Hospital	16	43	243
Orange Base Hospital	17	67	349
Parkes District Hospital	6	16	*
Other WNSWLHD	*	*	310
Total WNSWLHD	11	46	281

Western Sydney Local Health District (WSLHD)			
Auburn Hospital	12	56	218
Blacktown Hospital	13	48	118
Mount Druitt Hospital	12	49	239
Westmead Hospital (all units)	11	45	135
Total WSLHD	12	48	177

1. Excluding staged procedures.
2. Excluding staged procedures and non-urgent cystoscopy.
- (*) Values suppressed due to small numbers and to protect privacy.
- (†) Due to a major upgrade to the hospital's information system during the April to June 2012 quarter, the data are not considered reliable enough to report.

Note: All urgency categories include deferred patients as appropriate.

Note: Because staged patients are now reported separately, on-time performance by urgency category for this quarter are not comparable to data reported in previous NSW Ministry of Health's *Quarterly Hospital Performance Reports* and Bureau *Hospital Quarterly* reports prior to May 2011.

Source: Waiting List Collection On-line System, NSW Health. Data extracted on 20 July 2012.

Download our reports

The report, *Hospital Quarterly: Performance of NSW public hospitals, April to June 2012* and related reports are available at www.bhi.nsw.gov.au

The suite of products includes:

- *At a Glance* summarising the three core modules
- Three core modules titled *Admitted Patients, Elective Surgery and Emergency Departments*
- Activity and performance reports about emergency department care and elective surgery for more than 60 hospitals and NSW as a whole
- *Data Quality Assessments*
- *Technical Supplements*



About the Bureau

The Bureau of Health Information provides the community, healthcare professionals and the NSW Parliament with timely, accurate and comparable information on the performance of the NSW public health system in ways that enhance the system's accountability and inform efforts to increase its beneficial impact on the health and wellbeing of the people of NSW.

The Bureau is an independent, board-governed statutory health corporation. The conclusions in this report are those of the Bureau and no official endorsement by the NSW Minister for Health, the NSW Ministry of Health or any other NSW public health organisation is intended or should be inferred.

To contact the Bureau

Telephone: +61 2 8644 2100

Fax: +61 2 8644 2119

Email: enquiries@bhi.nsw.gov.au

Postal address:

PO Box 1770

Chatswood

New South Wales 2057

Australia

Web: www.bhi.nsw.gov.au

Copyright Bureau of Health Information 2012

State Health Publication Number: (BHI) 120222
ISSN 1838-3238

Suggested citation: Bureau of Health Information.
Hospital Quarterly: Performance of NSW public hospitals, April to June 2012. Elective Surgery.
3(2). Sydney (NSW); 2012.

Published September 2012

Please note that there is the potential for minor revisions of data in this report. Please check the online version at www.bhi.nsw.gov.au for any amendments.