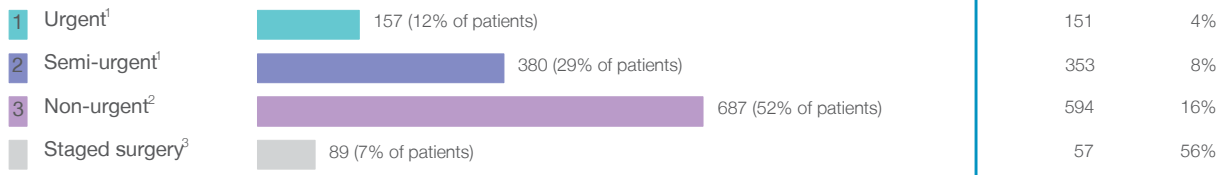


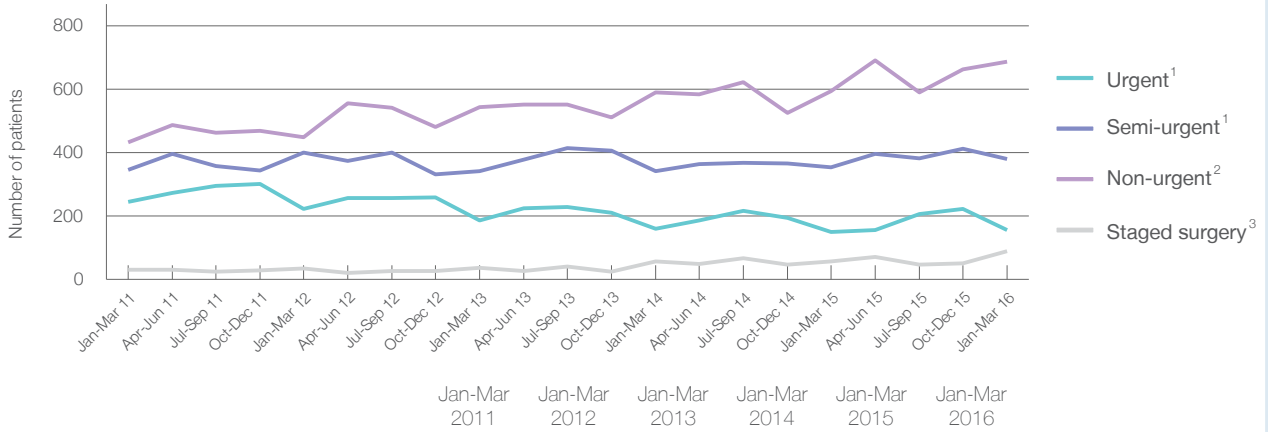
Wagga Wagga Base Hospital: Elective surgery performed

January to March 2016

Patients who received elective surgery by urgency category: 1,313 patients



Patients who received elective surgery by urgency category by quarter, January 2011 to March 2016



	Jan-Mar 2011	Jan-Mar 2012	Jan-Mar 2013	Jan-Mar 2014	Jan-Mar 2015	Jan-Mar 2016
All categories	1,055	1,107	1,110	1,151	1,155	1,313
Urgent ¹	244	222	187	161	151	157
Semi-urgent ¹	346	401	342	342	353	380
Non-urgent ²	433	449	543	590	594	687
Staged surgery ³	32	35	38	58	57	89

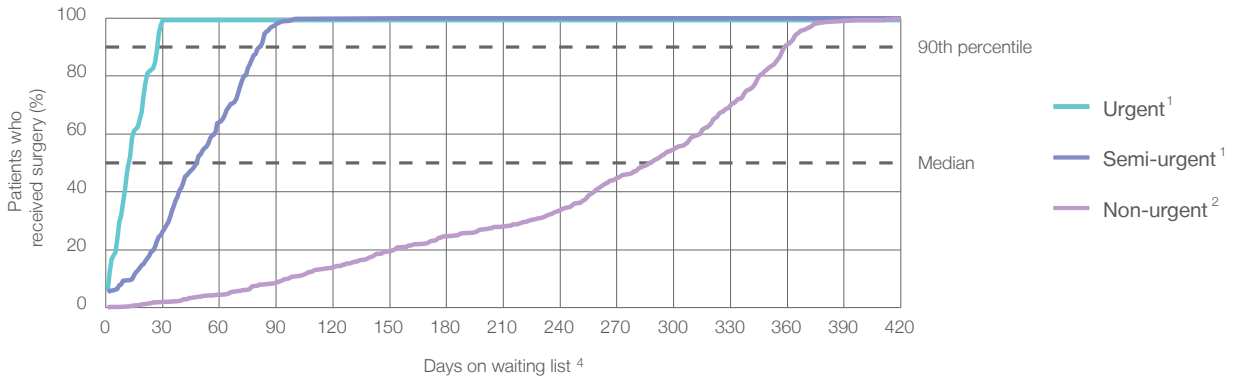
Wagga Wagga Base Hospital: Time waited to receive elective surgery

January to March 2016

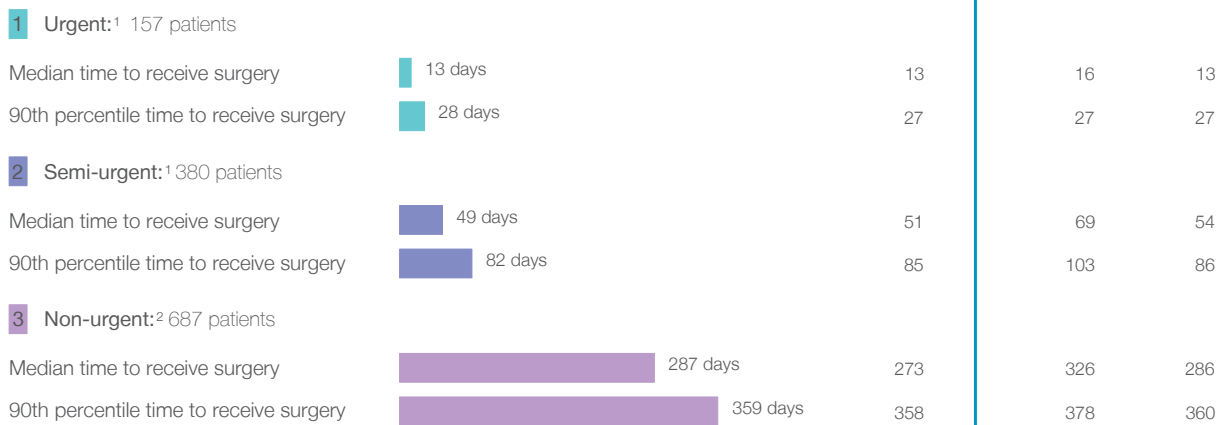
Percentage of patients who received surgery within the clinically recommended timeframe



Percentage of patients who received elective surgery by waiting time (days)



Waiting time (days) for people who received surgery by urgency category



Wagga Wagga Base Hospital: Time waited to receive elective surgery

January to March 2016

Median ⁵ waiting time (days) for patients who received elective surgery by specialty of surgeon		Same period last year	Peer group (this period)
Cardiothoracic surgery	n/a (0 patients)	n/a	n/a
Ear, nose and throat surgery	324 days (128 patients)	316	281
General surgery	75 days (323 patients)	75	59
Gynaecology	71 days (140 patients)	77	54
Medical	* (< 5 patients)	*	15
Neurosurgery	n/a (0 patients)	n/a	n/a
Ophthalmology	280 days (182 patients)	344	285
Orthopaedic surgery	270 days (239 patients)	288	223
Plastic surgery	n/a (0 patients)	n/a	78
Urology	41 days (273 patients)	59	44
Vascular surgery	64 days (25 patients)	85	24

Median ⁵ waiting time (days) for patients who received elective surgery by common procedures ⁷		Same period last year	Peer group (this period)
Abdominal hysterectomy	* (9 patients)	91	81
Cataract extraction	287 days (151 patients)	349	293
Cholecystectomy	94 days (36 patients)	88	71
Coronary artery bypass graft	n/a (0 patients)	n/a	n/a
Cystoscopy	30 days (66 patients)	50	29
Haemorrhoidectomy	* (< 5 patients)	*	78
Hysteroscopy	64 days (45 patients)	50	40
Inguinal herniorrhaphy	76 days (13 patients)	80	95
Myringoplasty / Tympanoplasty	* (5 patients)	*	345
Myringotomy	* (< 5 patients)	*	68
Other - General	100 days (39 patients)	151	41
Prostatectomy	61 days (12 patients)	35	76
Septoplasty	* (< 5 patients)	n/a	329
Tonsillectomy	330 days (49 patients)	326	294
Total hip replacement	299 days (27 patients)	351	259
Total knee replacement	344 days (49 patients)	352	311
Varicose veins stripping and ligation	280 days (13 patients)	205	111

Wagga Wagga Base Hospital: Elective surgery waiting list

January to March 2016

Patients ready for surgery on waiting list at start of quarter: 2,393 patients

Patients ready for surgery on waiting list at end of quarter: 2,390 patients

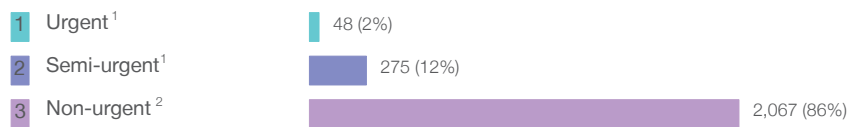
Patients not ready for surgery⁸ on waiting list at end of quarter: 232 patients

	Same period last year	Change since one year ago
Patients ready for surgery on waiting list at start of quarter	2,594	-8%
Patients ready for surgery on waiting list at end of quarter	2,542	-6%
Patients not ready for surgery ⁸ on waiting list at end of quarter	233	0%

Wagga Wagga Base Hospital: Patients ready for elective surgery

as at 31st March 2016

Patients ready for surgery on waiting list by urgency category: 2,390 patients



	Same period last year	Change since one year ago
Urgent ¹	50	-4%
Semi-urgent ¹	312	-12%
Non-urgent ²	2,180	-5%

Wagga Wagga Base Hospital: Patients ready for elective surgery as at 31st March 2016

Patients ready for elective surgery by specialty of surgeon: 2,390 patients

	As at 31 Mar 2016	Same time last year	Change since one year ago
All specialties	2,390	2,542	-6%
Cardiothoracic surgery	0	0	n/a
Ear, nose and throat surgery	639	540	18%
General surgery	379	466	-19%
Gynaecology	105	115	-9%
Medical	0	< 5	*
Neurosurgery	0	0	n/a
Ophthalmology	448	532	-16%
Orthopaedic surgery	640	699	-8%
Plastic surgery	0	0	n/a
Urology	157	162	-3%
Vascular surgery	22	24	-8%

Patients ready for elective surgery for common procedures ⁷

	As at 31 Mar 2016	Same time last year	Change since one year ago
Abdominal hysterectomy	13	15	-13%
Cataract extraction	389	473	-18%
Cholecystectomy	42	62	-32%
Coronary artery bypass graft	0	< 5	n/a
Cystoscopy	41	36	14%
Haemorrhoidectomy	< 5	< 5	*
Hysteroscopy	26	29	-10%
Inguinal herniorrhaphy	29	21	38%
Myringoplasty / Tympanoplasty	10	11	-9%
Myringotomy	34	35	-3%
Other - General	75	89	-16%
Prostatectomy	10	15	-33%
Septoplasty	14	7	100%
Tonsillectomy	289	187	55%
Total hip replacement	89	105	-15%
Total knee replacement	252	234	8%
Varicose veins stripping and ligation	19	20	-5%

Wagga Wagga Base Hospital: Patients ready for elective surgery
as at 31st March 2016

Patients ready for elective surgery, on the waiting list for longer than 12 months

As at 31 Mar 2016 Same time last year

	As at 31 Mar 2016	Same time last year
All specialties	14	44

* Suppressed due to small numbers and to protect privacy. Relevant graphs are also suppressed.

< 5 Less than five patients. For measures by urgency category, counts are included in an adjacent category. Relevant graphs are also suppressed.

1. Excluding staged procedures.
2. Excluding staged procedures and cystoscopy.
3. Including non-urgent cystoscopy.
4. Excludes the total number of days the patient was coded as 'not ready for surgery'.
5. This is the number of days it took for half of patients who received elective surgery during the period to be admitted and receive their surgery. The other half took equal to or longer than the median to be admitted for surgery.
6. This is the number of days it took for 90% of patients who received elective surgery during the period to be admitted and receive their surgery. The final 10% of patients took equal to or longer than the 90th percentile.
7. The procedures included in this list are procedures which are high volume; some may be associated with long waiting periods. For a description of these procedures see *Elective Surgery Glossary of Common Procedures, December 2012*.
8. Includes staged procedures, non-urgent cystoscopy, and patients currently not available for personal reasons.

For more information: For details of methods, see the *Technical Supplement: Elective surgery measures, January to March 2013*.

Note: All percentages rounded to whole numbers and therefore percentages may not add to 100%.

Source: Waiting List Collection On-Line System, NSW Health (extracted 15 April 2016).