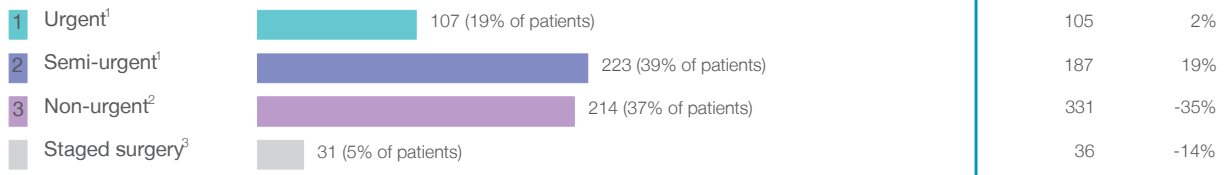


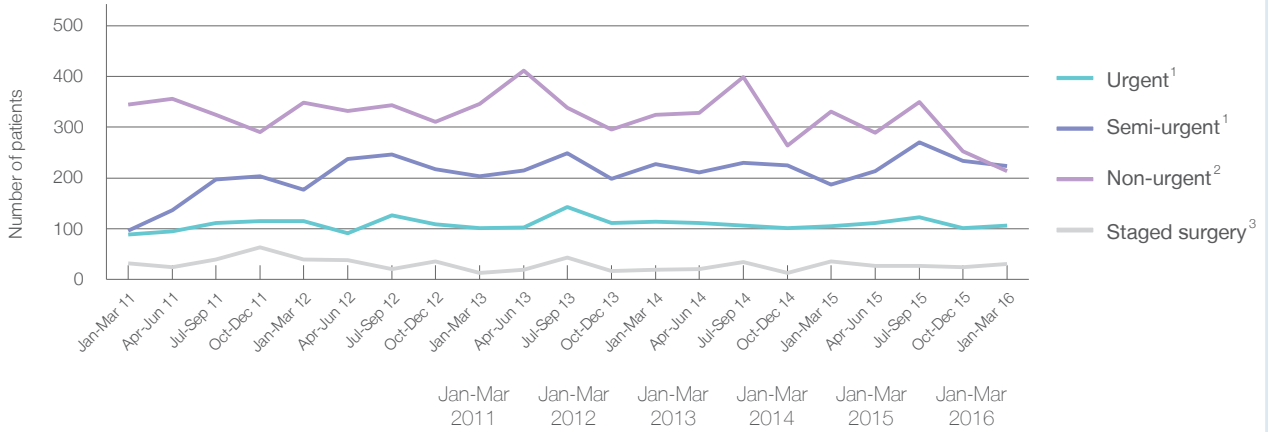
Manning Base Hospital: Elective surgery performed

January to March 2016

Patients who received elective surgery by urgency category: 575 patients



Patients who received elective surgery by urgency category by quarter, January 2011 to March 2016



	Jan-Mar 2011	Jan-Mar 2012	Jan-Mar 2013	Jan-Mar 2014	Jan-Mar 2015	Jan-Mar 2016
All categories	561	680	665	685	659	575
Urgent ¹	89	115	102	114	105	107
Semi-urgent ¹	96	177	204	227	187	223
Non-urgent ²	344	348	346	325	331	214
Staged surgery ³	32	40	13	19	36	31

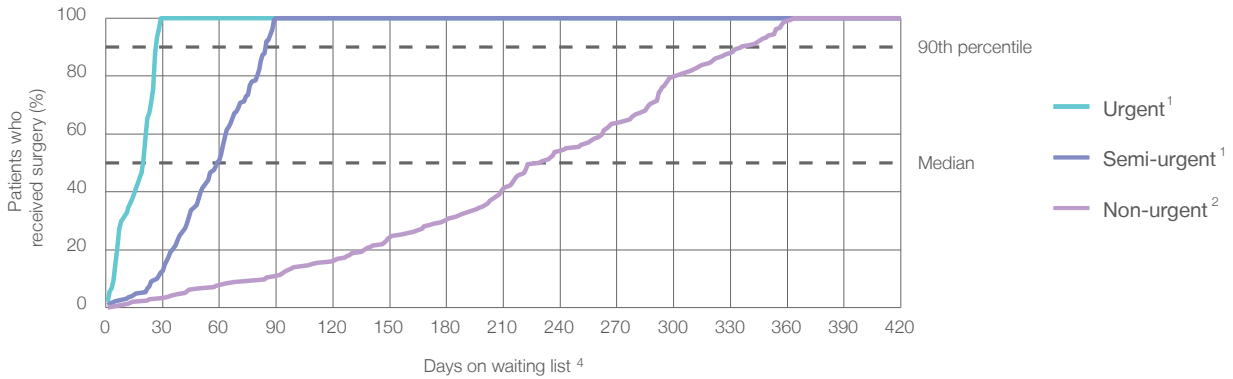
Manning Base Hospital: Time waited to receive elective surgery

January to March 2016

Percentage of patients who received surgery within the clinically recommended timeframe

	Recommended:	100%	Same period last year	Peer group (this period)
1 Urgent ¹	30 days	100%	100%	99%
2 Semi-urgent ¹	90 days	100%	100%	98%
3 Non-urgent ²	365 days	100%	100%	96%

Percentage of patients who received elective surgery by waiting time (days)



Waiting time (days) for people who received surgery by urgency category

		Peer group (this period)	This hospital (same period last year)	Peer group (same period last year)
1 Urgent: ¹ 107 patients	Median time to receive surgery	13	20	13
	90th percentile time to receive surgery	27	28	27
2 Semi-urgent: ¹ 223 patients	Median time to receive surgery	51	54	54
	90th percentile time to receive surgery	85	87	86
3 Non-urgent: ² 214 patients	Median time to receive surgery	273	213	286
	90th percentile time to receive surgery	358	351	360

Manning Base Hospital: Time waited to receive elective surgery

January to March 2016

Median ⁵ waiting time (days) for patients who received elective surgery by specialty of surgeon		Same period last year	Peer group (this period)
Cardiothoracic surgery	n/a (0 patients)	n/a	n/a
Ear, nose and throat surgery	n/a (0 patients)	n/a	281
General surgery	52 days (229 patients)	54	59
Gynaecology	58 days (92 patients)	89	54
Medical	n/a (0 patients)	n/a	15
Neurosurgery	n/a (0 patients)	n/a	n/a
Ophthalmology	278 days (72 patients)	218	285
Orthopaedic surgery	210 days (83 patients)	159	223
Plastic surgery	n/a (0 patients)	n/a	78
Urology	34 days (99 patients)	48	44
Vascular surgery	n/a (0 patients)	n/a	24

Median ⁵ waiting time (days) for patients who received elective surgery by common procedures ⁷		Same period last year	Peer group (this period)
Abdominal hysterectomy	* (< 5 patients)	*	81
Cataract extraction	285 days (61 patients)	219	293
Cholecystectomy	84 days (26 patients)	145	71
Coronary artery bypass graft	n/a (0 patients)	n/a	n/a
Cystoscopy	26 days (57 patients)	35	29
Haemorrhoidectomy	* (< 5 patients)	*	78
Hysteroscopy	50 days (27 patients)	47	40
Inguinal herniorrhaphy	85 days (12 patients)	61	95
Myringoplasty / Tympanoplasty	n/a (0 patients)	n/a	345
Myringotomy	n/a (0 patients)	n/a	68
Other - General	29 days (14 patients)	*	41
Prostatectomy	79 days (11 patients)	*	76
Septoplasty	n/a (0 patients)	n/a	329
Tonsillectomy	n/a (0 patients)	n/a	294
Total hip replacement	210 days (17 patients)	259	259
Total knee replacement	219 days (22 patients)	294	311
Varicose veins stripping and ligation	* (< 5 patients)	*	111

Manning Base Hospital: Elective surgery waiting list

January to March 2016

Patients ready for surgery on waiting list at start of quarter: 1,032 patients

Patients ready for surgery on waiting list at end of quarter: 1,107 patients

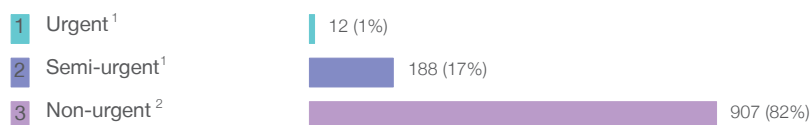
Patients not ready for surgery⁸ on waiting list at end of quarter: 136 patients

	Same period last year	Change since one year ago
Patients ready for surgery on waiting list at start of quarter	1,055	-2%
Patients ready for surgery on waiting list at end of quarter	1,074	3%
Patients not ready for surgery ⁸ on waiting list at end of quarter	145	-6%

Manning Base Hospital: Patients ready for elective surgery

as at 31st March 2016

Patients ready for surgery on waiting list by urgency category: 1,107 patients



	Same period last year	Change since one year ago
Urgent ¹	29	-59%
Semi-urgent ¹	199	-6%
Non-urgent ²	846	7%

Manning Base Hospital: Patients ready for elective surgery

as at 31st March 2016

Patients ready for elective surgery by specialty of surgeon: 1,107 patients

	As at 31 Mar 2016	Same time last year	Change since one year ago
All specialties	1,107	1,074	3%
Cardiothoracic surgery	0	0	n/a
Ear, nose and throat surgery	0	0	n/a
General surgery	314	320	-2%
Gynaecology	85	141	-40%
Medical	0	0	n/a
Neurosurgery	0	0	n/a
Ophthalmology	421	335	26%
Orthopaedic surgery	229	226	1%
Plastic surgery	0	0	n/a
Urology	58	52	12%
Vascular surgery	0	0	n/a

Patients ready for elective surgery for common procedures ⁷

	As at 31 Mar 2016	Same time last year	Change since one year ago
Abdominal hysterectomy	9	14	-36%
Cataract extraction	413	325	27%
Cholecystectomy	32	41	-22%
Coronary artery bypass graft	0	< 5	n/a
Cystoscopy	14	26	-46%
Haemorrhoidectomy	< 5	< 5	n/a
Hysteroscopy	13	19	-32%
Inguinal herniorrhaphy	39	41	-5%
Myringoplasty / Tympanoplasty	0	< 5	n/a
Myringotomy	0	< 5	n/a
Other - General	< 5	< 5	*
Prostatectomy	16	11	45%
Septoplasty	0	< 5	n/a
Tonsillectomy	0	< 5	n/a
Total hip replacement	52	40	30%
Total knee replacement	85	108	-21%
Varicose veins stripping and ligation	12	15	-20%

Manning Base Hospital: Patients ready for elective surgery as at 31st March 2016

Patients ready for elective surgery, on the waiting list for longer than 12 months

As at 31 Mar 2016 Same time last year

	As at 31 Mar 2016	Same time last year
All specialties	0	< 5

* Suppressed due to small numbers and to protect privacy. Relevant graphs are also suppressed.

< 5 Less than five patients. For measures by urgency category, counts are included in an adjacent category. Relevant graphs are also suppressed.

1. Excluding staged procedures.
2. Excluding staged procedures and cystoscopy.
3. Including non-urgent cystoscopy.
4. Excludes the total number of days the patient was coded as 'not ready for surgery'.
5. This is the number of days it took for half of patients who received elective surgery during the period to be admitted and receive their surgery. The other half took equal to or longer than the median to be admitted for surgery.
6. This is the number of days it took for 90% of patients who received elective surgery during the period to be admitted and receive their surgery. The final 10% of patients took equal to or longer than the 90th percentile.
7. The procedures included in this list are procedures which are high volume; some may be associated with long waiting periods. For a description of these procedures see *Elective Surgery Glossary of Common Procedures, December 2012*.
8. Includes staged procedures, non-urgent cystoscopy, and patients currently not available for personal reasons.

For more information: For details of methods, see the *Technical Supplement: Elective surgery measures, January to March 2013*.

Note: All percentages rounded to whole numbers and therefore percentages may not add to 100%.

Source: Waiting List Collection On-Line System, NSW Health (extracted 15 April 2016).