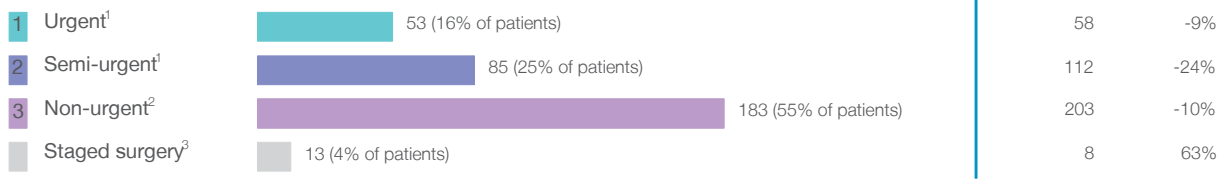


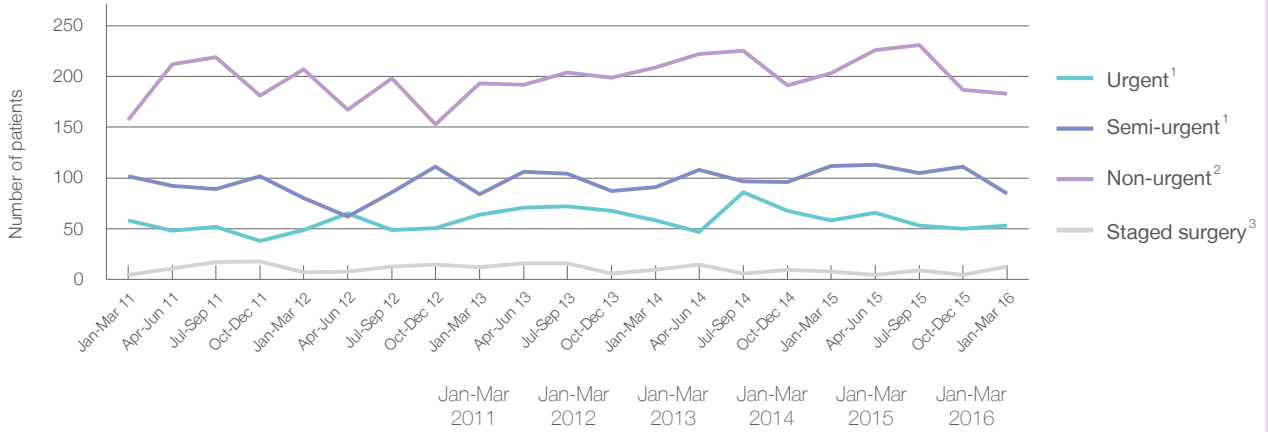
Bowral and District Hospital: Elective surgery performed

January to March 2016

Patients who received elective surgery by urgency category: 334 patients



Patients who received elective surgery by urgency category by quarter, January 2011 to March 2016



	Jan-Mar 2011	Jan-Mar 2012	Jan-Mar 2013	Jan-Mar 2014	Jan-Mar 2015	Jan-Mar 2016
All categories	322	343	353	368	381	334
Urgent ¹	58	49	64	58	58	53
Semi-urgent ¹	102	80	84	91	112	85
Non-urgent ²	157	207	193	209	203	183
Staged surgery ³	5	7	12	10	8	13

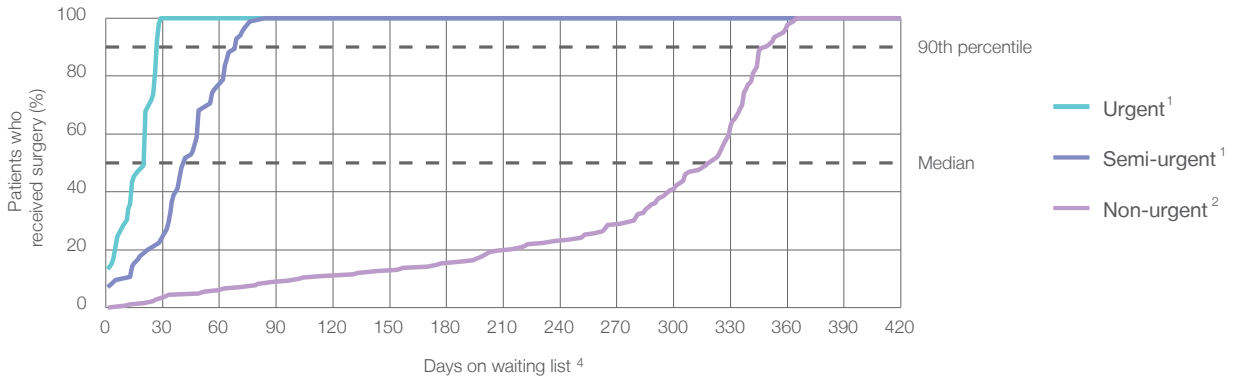
Bowral and District Hospital: Time waited to receive elective surgery

January to March 2016

Percentage of patients who received surgery within the clinically recommended timeframe

	Recommended: (days)	100%	Same period last year	Peer group (this period)
1 Urgent ¹	30 days	100%	100%	100%
2 Semi-urgent ¹	90 days	100%	100%	99%
3 Non-urgent ²	365 days	100%	100%	99%

Percentage of patients who received elective surgery by waiting time (days)



Waiting time (days) for people who received surgery by urgency category

	Peer group (this period)	This hospital (same period last year)	Peer group (same period last year)
1 Urgent: ¹ 53 patients			
Median time to receive surgery	21 days	14	13
90th percentile time to receive surgery	*	27	27
2 Semi-urgent: ¹ 85 patients			
Median time to receive surgery	42 days	51	40
90th percentile time to receive surgery	*	83	83
3 Non-urgent: ² 183 patients			
Median time to receive surgery	323 days	272	277
90th percentile time to receive surgery	349 days	348	322

Bowral and District Hospital: Time waited to receive elective surgery

January to March 2016

Median ⁵ waiting time (days) for patients who received elective surgery by specialty of surgeon		Same period last year	Peer group (this period)
Cardiothoracic surgery	n/a (0 patients)	n/a	n/a
Ear, nose and throat surgery	n/a (0 patients)	n/a	166
General surgery	34 days (91 patients)	40	47
Gynaecology	34 days (68 patients)	23	46
Medical	n/a (0 patients)	n/a	4
Neurosurgery	n/a (0 patients)	n/a	n/a
Ophthalmology	327 days (85 patients)	287	309
Orthopaedic surgery	306 days (90 patients)	279	185
Plastic surgery	n/a (0 patients)	n/a	49
Urology	n/a (0 patients)	n/a	35
Vascular surgery	n/a (0 patients)	n/a	*

Median ⁵ waiting time (days) for patients who received elective surgery by common procedures ⁷		Same period last year	Peer group (this period)
Abdominal hysterectomy	* (< 5 patients)	*	109
Cataract extraction	330 days (83 patients)	300	310
Cholecystectomy	56 days (15 patients)	36	47
Coronary artery bypass graft	n/a (0 patients)	n/a	n/a
Cystoscopy	* (5 patients)	*	34
Haemorrhoidectomy	n/a (0 patients)	*	74
Hysteroscopy	32 days (28 patients)	21	39
Inguinal herniorrhaphy	49 days (18 patients)	51	76
Myringoplasty / Tympanoplasty	n/a (0 patients)	n/a	*
Myringotomy	n/a (0 patients)	n/a	*
Other - General	* (< 5 patients)	*	27
Prostatectomy	n/a (0 patients)	n/a	77
Septoplasty	n/a (0 patients)	n/a	332
Tonsillectomy	n/a (0 patients)	n/a	201
Total hip replacement	351 days (15 patients)	290	215
Total knee replacement	327 days (39 patients)	300	282
Varicose veins stripping and ligation	n/a (0 patients)	n/a	154

Bowral and District Hospital: Elective surgery waiting list

January to March 2016

Patients ready for surgery on waiting list at start of quarter: 813 patients

Patients ready for surgery on waiting list at end of quarter: 781 patients

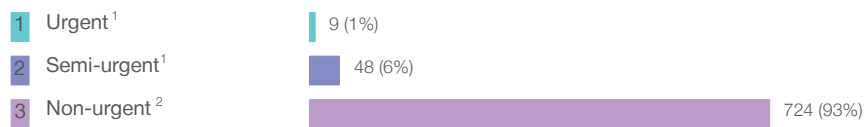
Patients not ready for surgery⁸ on waiting list at end of quarter: 69 patients

	Same period last year	Change since one year ago
Patients ready for surgery on waiting list at start of quarter	740	10%
Patients ready for surgery on waiting list at end of quarter	726	8%
Patients not ready for surgery ⁸ on waiting list at end of quarter	52	33%

Bowral and District Hospital: Patients ready for elective surgery

as at 31st March 2016

Patients ready for surgery on waiting list by urgency category: 781 patients



	Same period last year	Change since one year ago
Urgent ¹	6	50%
Semi-urgent ¹	45	7%
Non-urgent ²	675	7%

Bowral and District Hospital: Patients ready for elective surgery

as at 31st March 2016

Patients ready for elective surgery by specialty of surgeon: 781 patients

	As at 31 Mar 2016	Same time last year	Change since one year ago
All specialties	781	726	8%
Cardiothoracic surgery	0	0	n/a
Ear, nose and throat surgery	0	0	n/a
General surgery	71	58	22%
Gynaecology	69	42	64%
Medical	0	0	n/a
Neurosurgery	0	0	n/a
Ophthalmology	242	270	-10%
Orthopaedic surgery	399	356	12%
Plastic surgery	0	0	n/a
Urology	0	0	n/a
Vascular surgery	0	0	n/a

Patients ready for elective surgery for common procedures⁷

	As at 31 Mar 2016	Same time last year	Change since one year ago
Abdominal hysterectomy	11	13	-15%
Cataract extraction	241	268	-10%
Cholecystectomy	11	13	-15%
Coronary artery bypass graft	0	< 5	n/a
Cystoscopy	0	< 5	*
Haemorrhoidectomy	< 5	< 5	n/a
Hysteroscopy	18	6	200%
Inguinal herniorrhaphy	15	8	88%
Myringoplasty / Tympanoplasty	0	< 5	n/a
Myringotomy	0	< 5	n/a
Other - General	0	< 5	*
Prostatectomy	0	< 5	n/a
Septoplasty	0	< 5	n/a
Tonsillectomy	0	< 5	n/a
Total hip replacement	80	75	7%
Total knee replacement	146	142	3%
Varicose veins stripping and ligation	0	< 5	*

Bowral and District Hospital: Patients ready for elective surgery as at 31st March 2016

Patients ready for elective surgery, on the waiting list for longer than 12 months

	As at 31 Mar 2016	Same time last year
All specialties	0	0

- * Suppressed due to small numbers and to protect privacy. Relevant graphs are also suppressed.
- < 5 Less than five patients. For measures by urgency category, counts are included in an adjacent category. Relevant graphs are also suppressed.
1. Excluding staged procedures.
 2. Excluding staged procedures and cystoscopy.
 3. Including non-urgent cystoscopy.
 4. Excludes the total number of days the patient was coded as 'not ready for surgery'.
 5. This is the number of days it took for half of patients who received elective surgery during the period to be admitted and receive their surgery. The other half took equal to or longer than the median to be admitted for surgery.
 6. This is the number of days it took for 90% of patients who received elective surgery during the period to be admitted and receive their surgery. The final 10% of patients took equal to or longer than the 90th percentile.
 7. The procedures included in this list are procedures which are high volume; some may be associated with long waiting periods. For a description of these procedures see *Elective Surgery Glossary of Common Procedures, December 2012*.
 8. Includes staged procedures, non-urgent cystoscopy, and patients currently not available for personal reasons.
- For more information: For details of methods, see the *Technical Supplement: Elective surgery measures, January to March 2013*.
- Note:** All percentages rounded to whole numbers and therefore percentages may not add to 100%.
- Source:** Waiting List Collection On-Line System, NSW Health (extracted 15 April 2016).