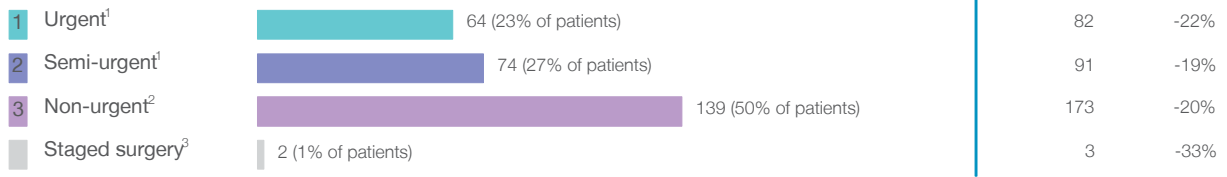


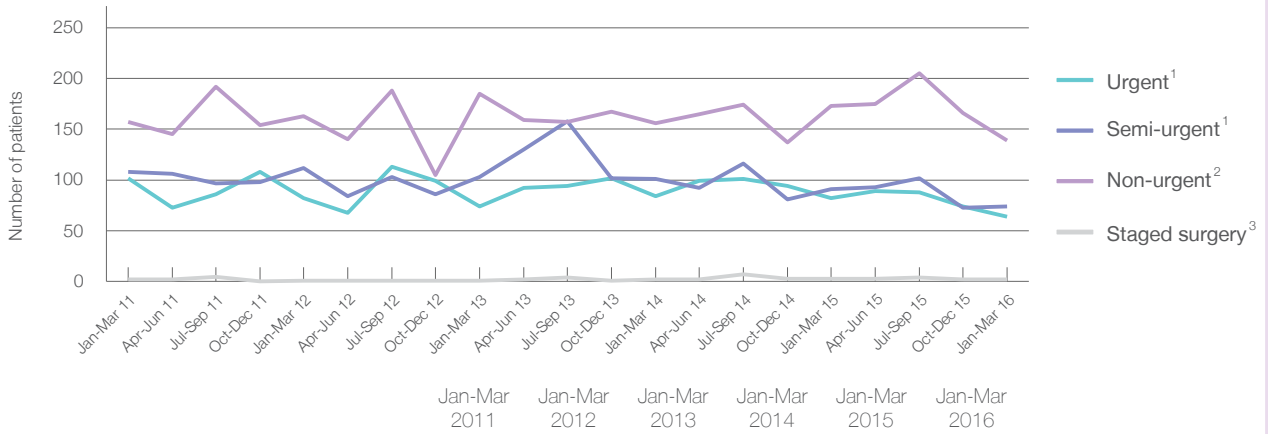
## Goulburn Base Hospital: Elective surgery performed

January to March 2016

Patients who received elective surgery by urgency category: 279 patients



Patients who received elective surgery by urgency category by quarter, January 2011 to March 2016



	Jan-Mar 2011	Jan-Mar 2012	Jan-Mar 2013	Jan-Mar 2014	Jan-Mar 2015	Jan-Mar 2016
All categories	369	358	363	343	349	279
Urgent <sup>1</sup>	102	82	74	84	82	64
Semi-urgent <sup>1</sup>	108	112	103	101	91	74
Non-urgent <sup>2</sup>	157	163	185	156	173	139
Staged surgery <sup>3</sup>	2	1	1	2	3	2

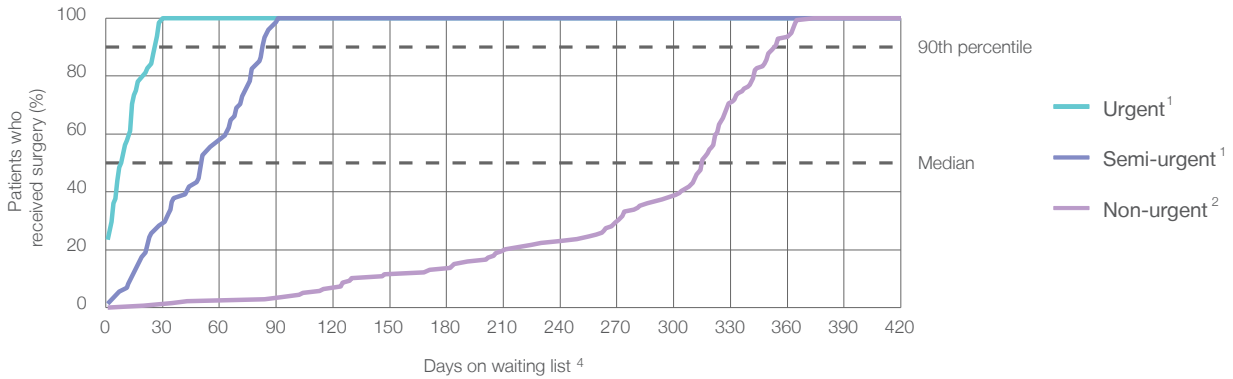
## Goulburn Base Hospital: Time waited to receive elective surgery

January to March 2016

Percentage of patients who received surgery within the clinically recommended timeframe

	Recommended: (days)	Percentage	Same period last year	Peer group (this period)
1 Urgent <sup>1</sup>	30 days	100%	100%	100%
2 Semi-urgent <sup>1</sup>	90 days	99%	93%	99%
3 Non-urgent <sup>2</sup>	365 days	99%	97%	99%

Percentage of patients who received elective surgery by waiting time (days)

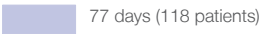






Waiting time (days) for people who received surgery by urgency category

	Peer group (this period)	This hospital (same period last year)	Peer group (same period last year)
<b>1 Urgent:</b> <sup>1</sup> 64 patients			
Median time to receive surgery	9 days	14	15
90th percentile time to receive surgery	*	27	27
<b>2 Semi-urgent:</b> <sup>1</sup> 74 patients			
Median time to receive surgery	51 days	51	52
90th percentile time to receive surgery	*	83	83
<b>3 Non-urgent:</b> <sup>2</sup> 139 patients			
Median time to receive surgery	315 days	272	287
90th percentile time to receive surgery	354 days	348	351

## Goulburn Base Hospital: Time waited to receive elective surgery

January to March 2016

Median <sup>5</sup> waiting time (days) for patients who received elective surgery by specialty of surgeon		Same period last year	Peer group (this period)
Cardiothoracic surgery	n/a (0 patients)	n/a	n/a
Ear, nose and throat surgery	* (5 patients)	*	166
General surgery	 77 days (118 patients)	67	47
Gynaecology	 17 days (42 patients)	12	46
Medical	* (7 patients)	*	4
Neurosurgery	n/a (0 patients)	n/a	n/a
Ophthalmology	322 days (52 patients)	303	309
Orthopaedic surgery	304 days (55 patients)	325	185
Plastic surgery	n/a (0 patients)	n/a	49
Urology	n/a (0 patients)	n/a	35
Vascular surgery	n/a (0 patients)	n/a	*

Median <sup>5</sup> waiting time (days) for patients who received elective surgery by common procedures <sup>7</sup>		Same period last year	Peer group (this period)
Abdominal hysterectomy	* (< 5 patients)	*	109
Cataract extraction	 322 days (52 patients)	303	310
Cholecystectomy	 87 days (16 patients)	113	47
Coronary artery bypass graft	n/a (0 patients)	n/a	n/a
Cystoscopy	n/a (0 patients)	*	34
Haemorrhoidectomy	n/a (0 patients)	*	74
Hysteroscopy	16 days (14 patients)	10	39
Inguinal herniorrhaphy	* (6 patients)	*	76
Myringoplasty / Tympanoplasty	n/a (0 patients)	n/a	*
Myringotomy	n/a (0 patients)	n/a	*
Other - General	27 days (23 patients)	28	27
Prostatectomy	n/a (0 patients)	n/a	77
Septoplasty	n/a (0 patients)	n/a	332
Tonsillectomy	262 days (10 patients)	252	201
Total hip replacement	348 days (11 patients)	357	215
Total knee replacement	 349 days (21 patients)	353	282
Varicose veins stripping and ligation	n/a (0 patients)	n/a	154

### Goulburn Base Hospital: Elective surgery waiting list

January to March 2016

Patients ready for surgery on waiting list at start of quarter: 635 patients

Patients ready for surgery on waiting list at end of quarter: 681 patients

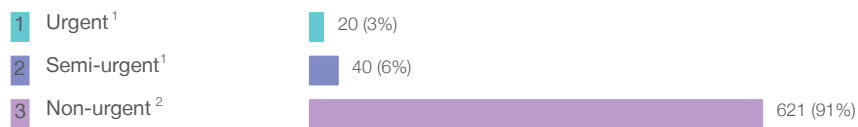
Patients not ready for surgery<sup>8</sup> on waiting list at end of quarter: 32 patients

	Same period last year	Change since one year ago
Patients ready for surgery on waiting list at start of quarter	661	-4%
Patients ready for surgery on waiting list at end of quarter	687	-1%
Patients not ready for surgery <sup>8</sup> on waiting list at end of quarter	29	10%

### Goulburn Base Hospital: Patients ready for elective surgery

as at 31st March 2016

Patients ready for surgery on waiting list by urgency category: 681 patients



	Same period last year	Change since one year ago
Urgent <sup>1</sup>	13	54%
Semi-urgent <sup>1</sup>	65	-38%
Non-urgent <sup>2</sup>	609	2%

## Goulburn Base Hospital: Patients ready for elective surgery as at 31st March 2016

Patients ready for elective surgery by specialty of surgeon: 681 patients

	As at 31 Mar 2016	Same time last year	Change since one year ago
All specialties	681	687	-1%
Cardiothoracic surgery	0	0	n/a
Ear, nose and throat surgery	< 5	5	*
General surgery	149	211	-29%
Gynaecology	13	11	18%
Medical	0	< 5	*
Neurosurgery	0	0	n/a
Ophthalmology	232	193	20%
Orthopaedic surgery	286	265	8%
Plastic surgery	0	0	n/a
Urology	0	0	n/a
Vascular surgery	0	0	n/a

Patients ready for elective surgery for common procedures <sup>7</sup>

	As at 31 Mar 2016	Same time last year	Change since one year ago
Abdominal hysterectomy	< 5	< 5	n/a
Cataract extraction	232	193	20%
Cholecystectomy	33	33	0%
Coronary artery bypass graft	0	< 5	n/a
Cystoscopy	< 5	< 5	n/a
Haemorrhoidectomy	< 5	< 5	*
Hysteroscopy	5	5	0%
Inguinal herniorrhaphy	22	25	-12%
Myringoplasty / Tympanoplasty	0	< 5	n/a
Myringotomy	0	< 5	n/a
Other - General	9	18	-50%
Prostatectomy	0	< 5	n/a
Septoplasty	0	< 5	n/a
Tonsillectomy	18	40	-55%
Total hip replacement	63	60	5%
Total knee replacement	111	111	0%
Varicose veins stripping and ligation	< 5	9	*

## Goulburn Base Hospital: Patients ready for elective surgery as at 31st March 2016

Patients ready for elective surgery, on the waiting list for longer than 12 months

As at 31 Mar 2016      Same time last year

	As at 31 Mar 2016	Same time last year
All specialties	0	0

\* Suppressed due to small numbers and to protect privacy. Relevant graphs are also suppressed.

< 5 Less than five patients. For measures by urgency category, counts are included in an adjacent category. Relevant graphs are also suppressed.

1. Excluding staged procedures.
2. Excluding staged procedures and cystoscopy.
3. Including non-urgent cystoscopy.
4. Excludes the total number of days the patient was coded as 'not ready for surgery'.
5. This is the number of days it took for half of patients who received elective surgery during the period to be admitted and receive their surgery. The other half took equal to or longer than the median to be admitted for surgery.
6. This is the number of days it took for 90% of patients who received elective surgery during the period to be admitted and receive their surgery. The final 10% of patients took equal to or longer than the 90th percentile.
7. The procedures included in this list are procedures which are high volume; some may be associated with long waiting periods. For a description of these procedures see *Elective Surgery Glossary of Common Procedures, December 2012*.
8. Includes staged procedures, non-urgent cystoscopy, and patients currently not available for personal reasons.

For more information: For details of methods, see the *Technical Supplement: Elective surgery measures, January to March 2013*.

**Note:** All percentages rounded to whole numbers and therefore percentages may not add to 100%.

**Source:** Waiting List Collection On-Line System, NSW Health (extracted 15 April 2016).