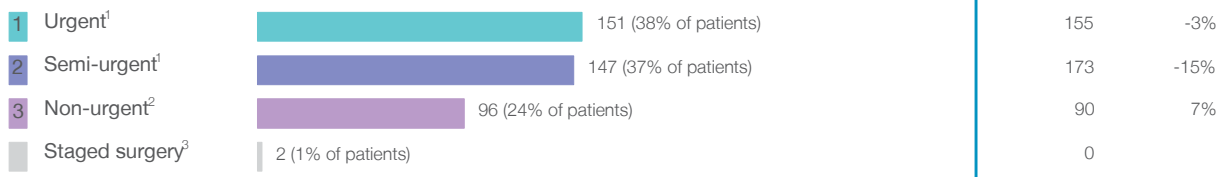


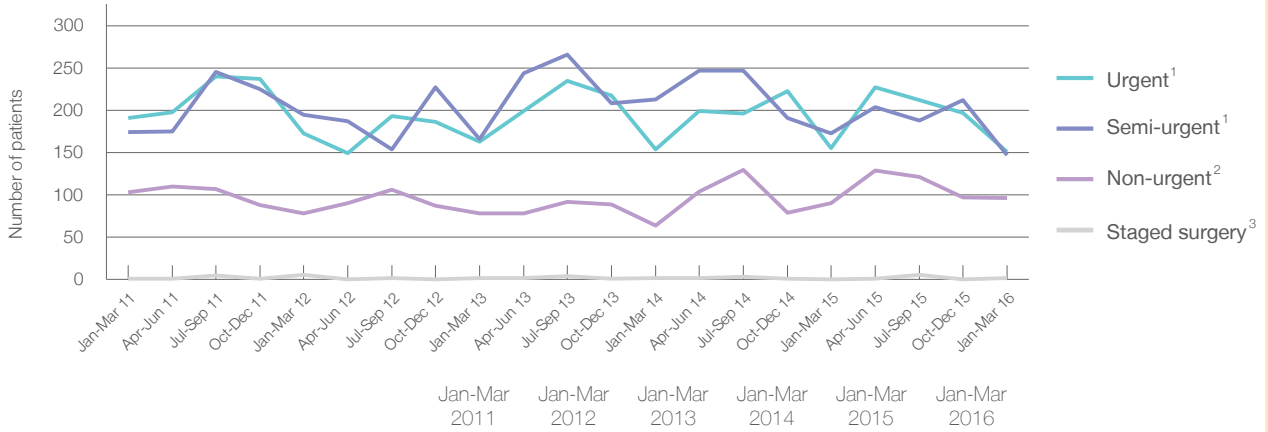
Royal Hospital for Women: Elective surgery performed

January to March 2016

Patients who received elective surgery by urgency category: 396 patients



Patients who received elective surgery by urgency category by quarter, January 2011 to March 2016



Urgency Category	Jan-Mar 2011	Jan-Mar 2012	Jan-Mar 2013	Jan-Mar 2014	Jan-Mar 2015	Jan-Mar 2016
All categories	469	452	409	433	418	396
Urgent ¹	191	173	163	154	155	151
Semi-urgent ¹	174	195	166	213	173	147
Non-urgent ²	103	78	78	64	90	96
Staged surgery ³	1	6	2	2	0	2

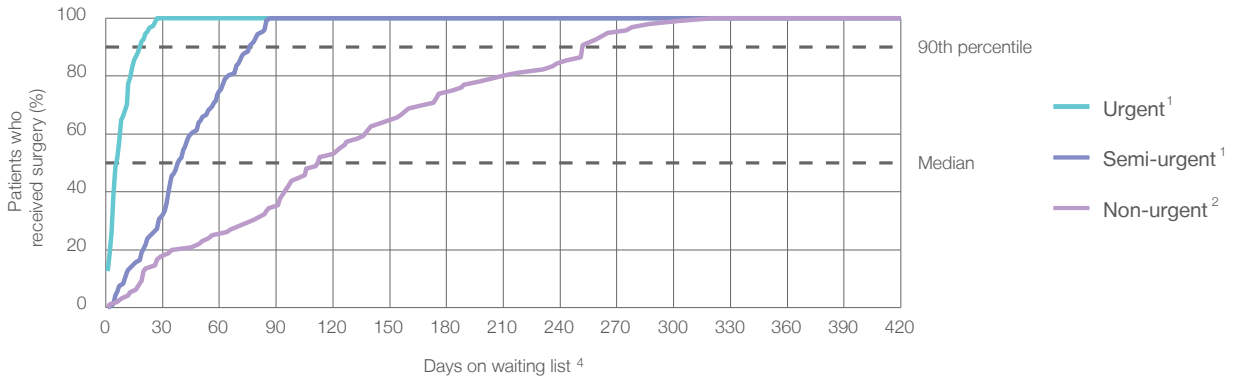
Royal Hospital for Women: Time waited to receive elective surgery

January to March 2016

Percentage of patients who received surgery within the clinically recommended timeframe

	Recommended: (days)	100%	Same period last year	Peer group (this period)
1 Urgent ¹	30 days	100%	100%	100%
2 Semi-urgent ¹	90 days	100%	100%	99%
3 Non-urgent ²	365 days	100%	100%	100%

Percentage of patients who received elective surgery by waiting time (days)



Waiting time (days) for people who received surgery by urgency category

	Peer group (this period)	This hospital (same period last year)	Peer group (same period last year)
1 Urgent: ¹ 151 patients			
Median time to receive surgery	6 days	11	8
90th percentile time to receive surgery	18 days	25	25
2 Semi-urgent: ¹ 147 patients			
Median time to receive surgery	39 days	44	35
90th percentile time to receive surgery	76 days	83	72
3 Non-urgent: ² 96 patients			
Median time to receive surgery	113 days	247	135
90th percentile time to receive surgery	*	356	*

Royal Hospital for Women: Time waited to receive elective surgery

January to March 2016

Median ⁵ waiting time (days) for patients who received elective surgery by specialty of surgeon		Same period last year	Peer group (this period)
Cardiothoracic surgery	n/a (0 patients)	n/a	*
Ear, nose and throat surgery	n/a (0 patients)	n/a	320
General surgery	8 days (22 patients)	29	21
Gynaecology	26 days (374 patients)	25	26
Medical	n/a (0 patients)	n/a	*
Neurosurgery	n/a (0 patients)	n/a	n/a
Ophthalmology	n/a (0 patients)	n/a	130
Orthopaedic surgery	n/a (0 patients)	n/a	64
Plastic surgery	n/a (0 patients)	n/a	*
Urology	n/a (0 patients)	n/a	n/a
Vascular surgery	n/a (0 patients)	n/a	n/a

Median ⁵ waiting time (days) for patients who received elective surgery by common procedures ⁷		Same period last year	Peer group (this period)
Abdominal hysterectomy	13 days (40 patients)	19	13
Cataract extraction	n/a (0 patients)	n/a	263
Cholecystectomy	n/a (0 patients)	n/a	86
Coronary artery bypass graft	n/a (0 patients)	n/a	n/a
Cystoscopy	* (6 patients)	*	*
Haemorrhoidectomy	n/a (0 patients)	n/a	*
Hysteroscopy	34 days (116 patients)	27	34
Inguinal herniorrhaphy	n/a (0 patients)	n/a	86
Myringoplasty / Tympanoplasty	n/a (0 patients)	n/a	*
Myringotomy	n/a (0 patients)	n/a	n/a
Other - General	n/a (0 patients)	n/a	17
Prostatectomy	n/a (0 patients)	n/a	n/a
Septoplasty	n/a (0 patients)	n/a	350
Tonsillectomy	n/a (0 patients)	n/a	*
Total hip replacement	n/a (0 patients)	n/a	n/a
Total knee replacement	n/a (0 patients)	n/a	n/a
Varicose veins stripping and ligation	n/a (0 patients)	n/a	n/a

Royal Hospital for Women: Elective surgery waiting list

January to March 2016

Patients ready for surgery on waiting list at start of quarter: 297 patients

Patients ready for surgery on waiting list at end of quarter: 341 patients

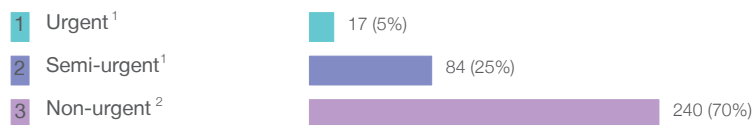
Patients not ready for surgery⁸ on waiting list at end of quarter: 10 patients

	Same period last year	Change since one year ago
Patients ready for surgery on waiting list at start of quarter	282	5%
Patients ready for surgery on waiting list at end of quarter	314	9%
Patients not ready for surgery ⁸ on waiting list at end of quarter	13	-23%

Royal Hospital for Women: Patients ready for elective surgery

as at 31st March 2016

Patients ready for surgery on waiting list by urgency category: 341 patients



	Same period last year	Change since one year ago
Urgent ¹	23	-26%
Semi-urgent ¹	94	-11%
Non-urgent ²	197	22%

Royal Hospital for Women: Patients ready for elective surgery as at 31st March 2016

Patients ready for elective surgery by specialty of surgeon: 341 patients

	As at 31 Mar 2016	Same time last year	Change since one year ago
All specialties	341	314	9%
Cardiothoracic surgery	0	0	n/a
Ear, nose and throat surgery	0	0	n/a
General surgery	29	24	21%
Gynaecology	312	290	8%
Medical	0	0	n/a
Neurosurgery	0	0	n/a
Ophthalmology	0	0	n/a
Orthopaedic surgery	0	0	n/a
Plastic surgery	0	0	n/a
Urology	0	0	n/a
Vascular surgery	0	0	n/a

Patients ready for elective surgery for common procedures ⁷

	As at 31 Mar 2016	Same time last year	Change since one year ago
Abdominal hysterectomy	49	30	63%
Cataract extraction	0	< 5	n/a
Cholecystectomy	0	< 5	n/a
Coronary artery bypass graft	0	< 5	n/a
Cystoscopy	< 5	< 5	n/a
Haemorrhoidectomy	0	< 5	n/a
Hysteroscopy	117	91	29%
Inguinal herniorrhaphy	0	< 5	n/a
Myringoplasty / Tympanoplasty	0	< 5	n/a
Myringotomy	0	< 5	n/a
Other - General	0	< 5	n/a
Prostatectomy	0	< 5	n/a
Septoplasty	0	< 5	n/a
Tonsillectomy	0	< 5	n/a
Total hip replacement	0	< 5	n/a
Total knee replacement	0	< 5	n/a
Varicose veins stripping and ligation	0	< 5	n/a

Royal Hospital for Women: Patients ready for elective surgery as at 31st March 2016

Patients ready for elective surgery, on the waiting list for longer than 12 months

As at 31 Mar 2016 Same time last year

	As at 31 Mar 2016	Same time last year
All specialties	0	0

- * Suppressed due to small numbers and to protect privacy. Relevant graphs are also suppressed.
- < 5 Less than five patients. For measures by urgency category, counts are included in an adjacent category. Relevant graphs are also suppressed.
1. Excluding staged procedures.
 2. Excluding staged procedures and cystoscopy.
 3. Including non-urgent cystoscopy.
 4. Excludes the total number of days the patient was coded as 'not ready for surgery'.
 5. This is the number of days it took for half of patients who received elective surgery during the period to be admitted and receive their surgery. The other half took equal to or longer than the median to be admitted for surgery.
 6. This is the number of days it took for 90% of patients who received elective surgery during the period to be admitted and receive their surgery. The final 10% of patients took equal to or longer than the 90th percentile.
 7. The procedures included in this list are procedures which are high volume; some may be associated with long waiting periods. For a description of these procedures see *Elective Surgery Glossary of Common Procedures, December 2012*.
 8. Includes staged procedures, non-urgent cystoscopy, and patients currently not available for personal reasons.
- For more information: For details of methods, see the *Technical Supplement: Elective surgery measures, January to March 2013*.
- Note:** All percentages rounded to whole numbers and therefore percentages may not add to 100%.
- Source:** Waiting List Collection On-Line System, NSW Health (extracted 15 April 2016).