

Kurri Kurri District Hospital: Emergency department (ED) overview

July to September 2016

All presentations:¹ 969 patients

Emergency presentations:² 953 patients

Same period last year	Change since one year ago
1,360	-28.8%
1,320	-27.8%

Kurri Kurri District Hospital: Time patients waited to start treatment³

July to September 2016

Triage 2 Emergency (e.g. chest pain, severe burns): 87 patients

Median time to start treatment⁴ 5 minutes

95th percentile time to start treatment⁵ *

Triage 3 Urgent (e.g. moderate blood loss, dehydration): 308 patients

Median time to start treatment⁴ 9 minutes

95th percentile time to start treatment⁵ 54 minutes

Triage 4 Semi-urgent (e.g. sprained ankle, earache): 441 patients

Median time to start treatment⁴ 13 minutes

95th percentile time to start treatment⁵ 73 minutes

Triage 5 Non-urgent (e.g. small cuts or abrasions): 117 patients

Median time to start treatment⁴ 10 minutes

95th percentile time to start treatment⁵ *

Same period last year	NSW (this period)
93	
3 minutes	8 minutes
*	41 minutes
242	
12 minutes	21 minutes
84 minutes	103 minutes
759	
17 minutes	27 minutes
95 minutes	139 minutes
226	
16 minutes	24 minutes
97 minutes	138 minutes

Kurri Kurri District Hospital: Time from presentation until leaving the ED

July to September 2016

Attendances used to calculate time to leaving the ED:⁶ 969 patients

Percentage of patients who spent four hours or less in the ED

93.6%

Same period last year	Change since one year ago
1,360	-28.8%
92.6%	

* Suppressed due to small number of patients and to protect privacy. Relevant graphs are also suppressed.

1. All emergency and non-emergency attendances at the emergency department (ED).
2. All attendances that have a triage category and are coded as emergency presentations or unplanned return visits.
3. Some patients are excluded from ED time measures due to calculation requirements. For details, see the Technical Supplement: Emergency department measures, July to September 2016.
4. The median is the time by which half of patients started treatment. The other half of patients waited equal to or longer than this time.
5. The 95th percentile is the time by which 95% of patients started treatment. The final 5% of patients waited equal to or longer than this time.
6. All presentations that have a departure time.

Note: Presentation time is the earlier time recorded for clerical registration or the triage process. Treatment time is the earliest time recorded when a healthcare professional provides medical care relevant to the patient's presenting problems.

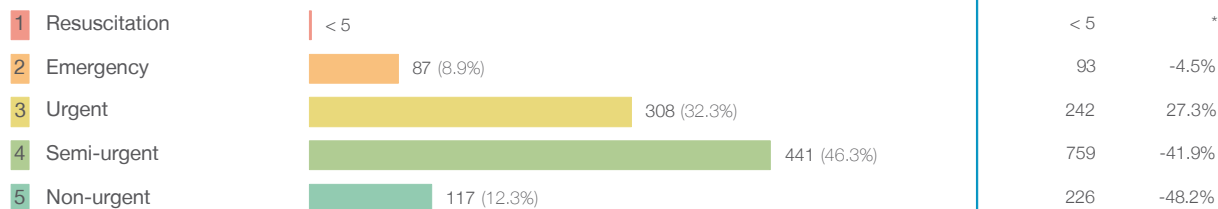
Source: Health Information Exchange, NSW Health (extracted 20 October 2016).

Kurri Kurri District Hospital: Patients presenting to the emergency department

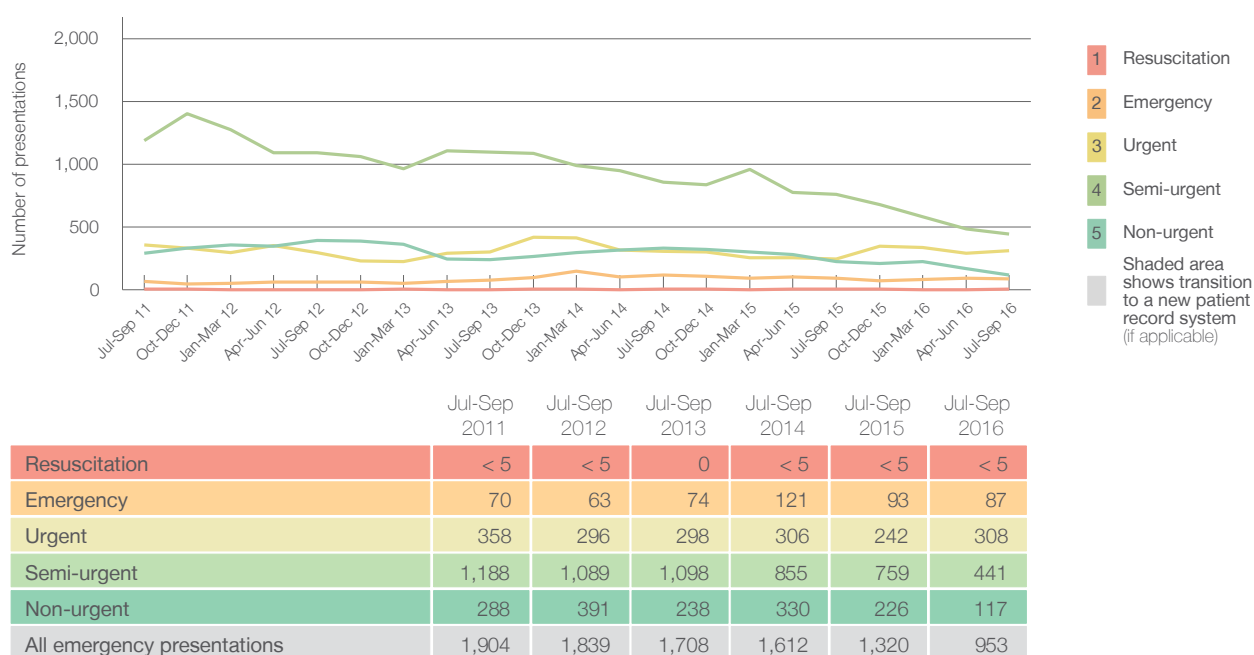
July to September 2016

All presentations¹ 969 patients

Emergency presentations² by triage category: 953 patients



Emergency presentations² by quarter, July 2011 to September 2016[‡]



Kurri Kurri District Hospital: Patients arriving by ambulance

July to September 2016

ED Transfer of care time is not currently available for this hospital.⁷

(†) Data points are not shown in graphs for quarters when patient numbers are too small.

(‡) Caution is advised when interpreting abrupt changes over time at the hospital level. For example, performance before and after transition to a new information system is not directly comparable. For more information, see Background Paper: Approaches to reporting time measures of emergency department performance, December 2011.

Kurri Kurri District Hospital: Time patients waited to start treatment, triage 2

July to September 2016

Triage 2 Emergency (e.g. chest pain, severe burns)

Number of triage 2 patients: 87

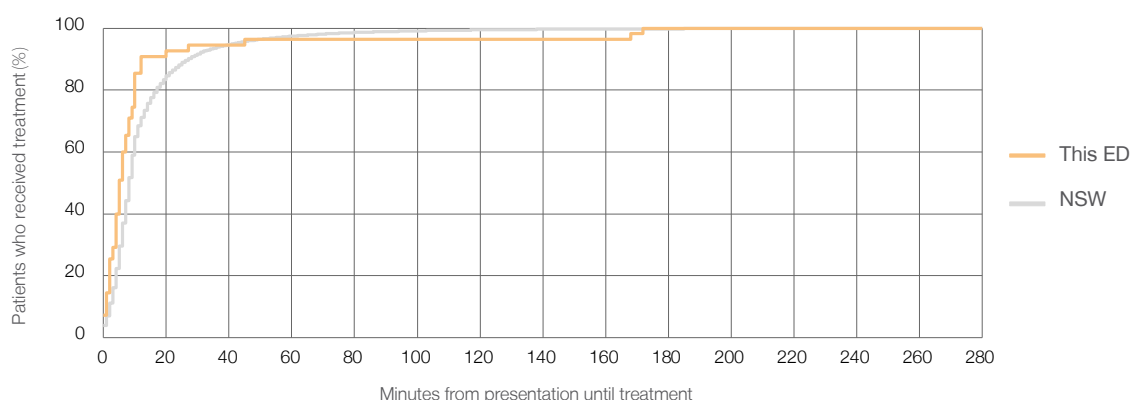
Number of triage 2 patients used to calculate waiting time: ³ 55

Median time to start treatment ⁴ 5 minutes

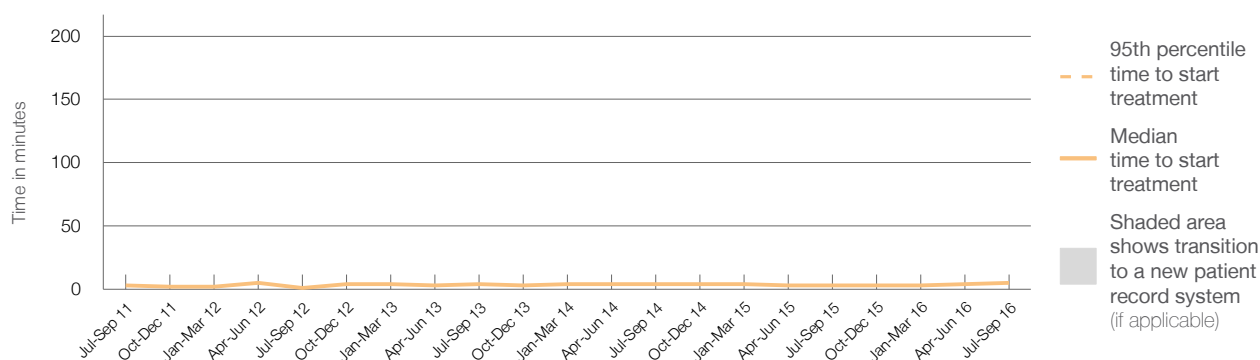
95th percentile time to start treatment ⁵ *

Same period last year	NSW (this period)
93	
71	
3 minutes	8 minutes
*	41 minutes

Percentage of triage 2 patients who received treatment by time, July to September 2016



Time patients waited to start treatment (minutes) for triage 2 patients, July 2011 to September 2016 ^{†‡}



	Jul-Sep 2011	Jul-Sep 2012	Jul-Sep 2013	Jul-Sep 2014	Jul-Sep 2015	Jul-Sep 2016
Median time to start treatment ⁴ (minutes)	3	1	4	4	3	5
95th percentile time to start treatment ⁵ (minutes)	*	*	*	31	*	*

(†) Data points are not shown in graphs for quarters when patient numbers are too small.

(‡) Caution is advised when interpreting abrupt changes over time at the hospital level. For example, performance before and after transition to a new information system is not directly comparable. For more information, see Background Paper: Approaches to reporting time measures of emergency department performance, December 2011.

Kurri Kurri District Hospital: Time patients waited to start treatment, triage 3

July to September 2016

Triage 3 Urgent (e.g. moderate blood loss, dehydration)

Number of triage 3 patients: 308

Number of triage 3 patients used to calculate waiting time:³ 217

Median time to start treatment⁴

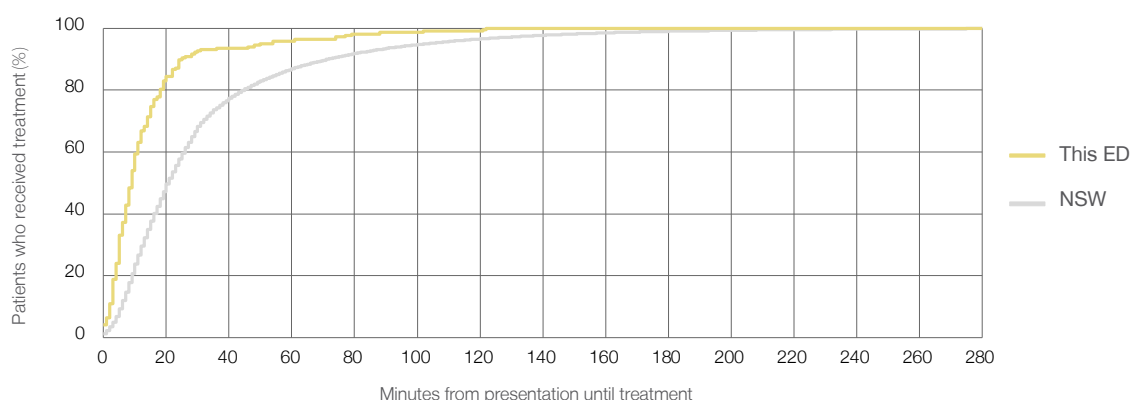
9 minutes

95th percentile time to start treatment⁵

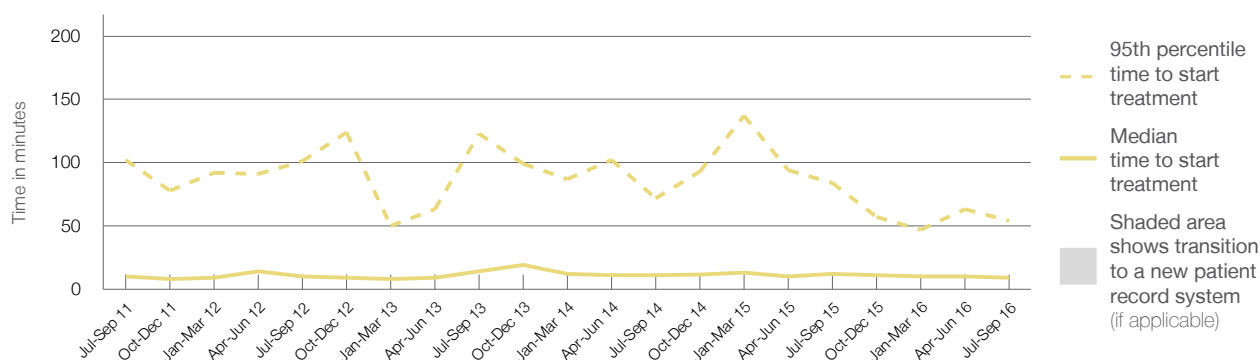
54 minutes

Same period last year	NSW (this period)
242	
192	
12 minutes	21 minutes
84 minutes	103 minutes

Percentage of triage 3 patients who received treatment by time, July to September 2016



Time patients waited to start treatment (minutes) for triage 3 patients, July 2011 to September 2016^{†‡}



	Jul-Sep 2011	Jul-Sep 2012	Jul-Sep 2013	Jul-Sep 2014	Jul-Sep 2015	Jul-Sep 2016
Median time to start treatment ⁴ (minutes)	10	10	14	11	12	9
95th percentile time to start treatment ⁵ (minutes)	102	101	123	72	84	54

(†) Data points are not shown in graphs for quarters when patient numbers are too small.

(‡) Caution is advised when interpreting abrupt changes over time at the hospital level. For example, performance before and after transition to a new information system is not directly comparable. For more information, see Background Paper: Approaches to reporting time measures of emergency department performance, December 2011.

Kurri Kurri District Hospital: Time patients waited to start treatment, triage 4

July to September 2016

Triage 4 Semi-urgent (e.g. sprained ankle, earache)

Number of triage 4 patients: 441

Number of triage 4 patients used to calculate waiting time:³ 280

Median time to start treatment⁴

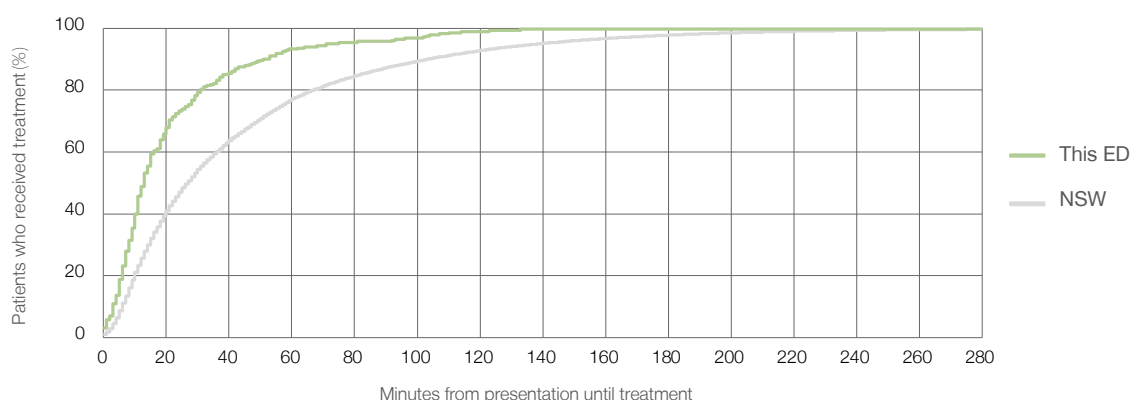
13 minutes

95th percentile time to start treatment⁵

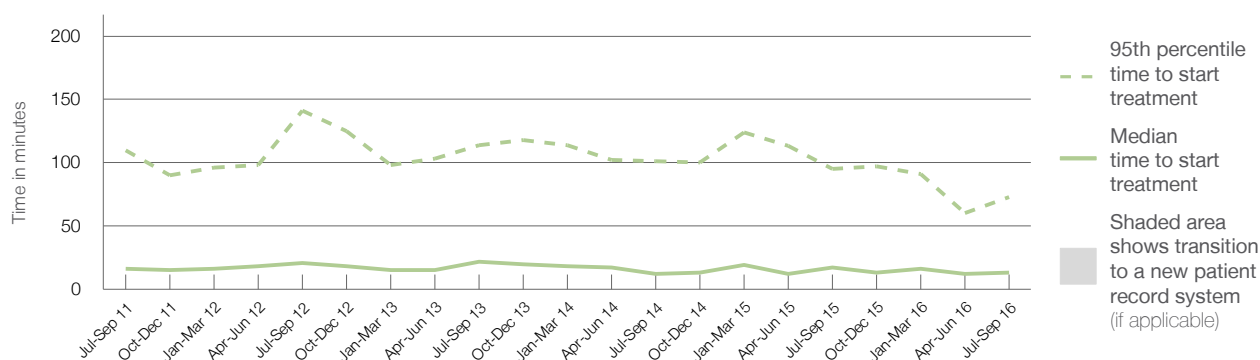
73 minutes

Same period last year	NSW (this period)
759	
595	
17 minutes	27 minutes
95 minutes	139 minutes

Percentage of triage 4 patients who received treatment by time, July to September 2016



Time patients waited to start treatment (minutes) for triage 4 patients, July 2011 to September 2016^{†‡}



	Jul-Sep 2011	Jul-Sep 2012	Jul-Sep 2013	Jul-Sep 2014	Jul-Sep 2015	Jul-Sep 2016
Median time to start treatment ⁴ (minutes)	16	21	22	12	17	13
95th percentile time to start treatment ⁵ (minutes)	110	141	114	101	95	73

(†) Data points are not shown in graphs for quarters when patient numbers are too small.

(‡) Caution is advised when interpreting abrupt changes over time at the hospital level. For example, performance before and after transition to a new information system is not directly comparable. For more information, see Background Paper: Approaches to reporting time measures of emergency department performance, December 2011.

Kurri Kurri District Hospital: Time patients waited to start treatment, triage 5

July to September 2016

Triage 5 Non-urgent (e.g. small cuts or abrasions)

Number of triage 5 patients: 117

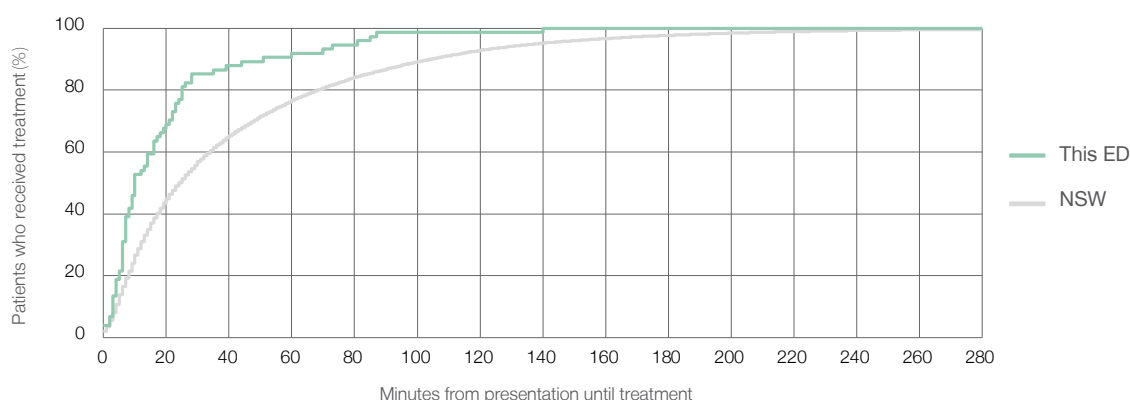
Number of triage 5 patients used to calculate waiting time:³ 74

Median time to start treatment⁴ 10 minutes

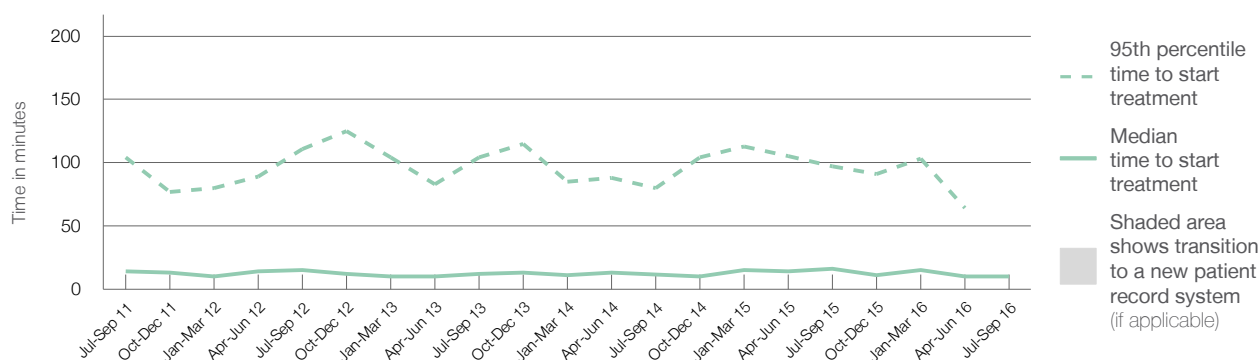
95th percentile time to start treatment⁵ *

Same period last year	NSW (this period)
226	
176	
16 minutes	24 minutes
97 minutes	138 minutes

Percentage of triage 5 patients who received treatment by time, July to September 2016



Time patients waited to start treatment (minutes) for triage 5 patients, July 2011 to September 2016^{†‡}



	Jul-Sep 2011	Jul-Sep 2012	Jul-Sep 2013	Jul-Sep 2014	Jul-Sep 2015	Jul-Sep 2016
Median time to start treatment ⁴ (minutes)	14	15	12	12	16	10
95th percentile time to start treatment ⁵ (minutes)	104	111	104	80	97	*

(†) Data points are not shown in graphs for quarters when patient numbers are too small.

(‡) Caution is advised when interpreting abrupt changes over time at the hospital level. For example, performance before and after transition to a new information system is not directly comparable. For more information, see Background Paper: Approaches to reporting time measures of emergency department performance, December 2011.

Kurri Kurri District Hospital: Time patients spent in the ED

July to September 2016

All presentations:¹ 969 patients

Presentations used to calculate time to leaving the ED:⁶ 969 patients

Median time spent in the ED⁸

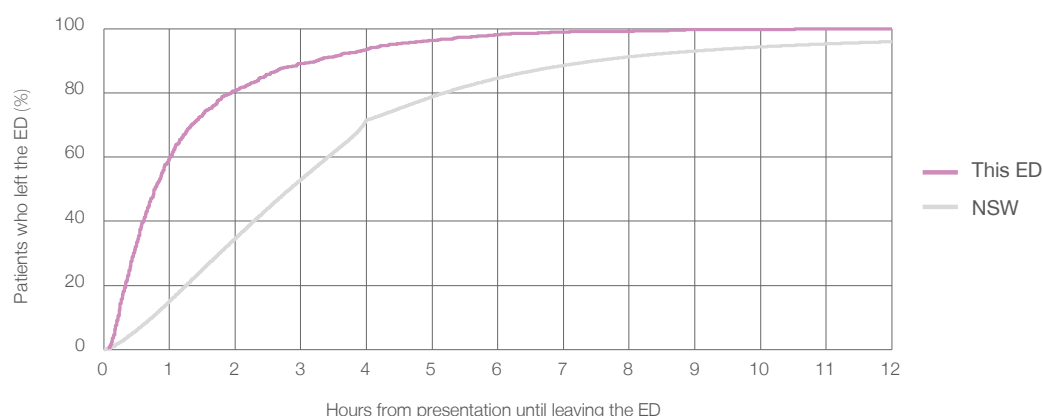
0 hours and 47 minutes

95th percentile time spent in the ED⁹

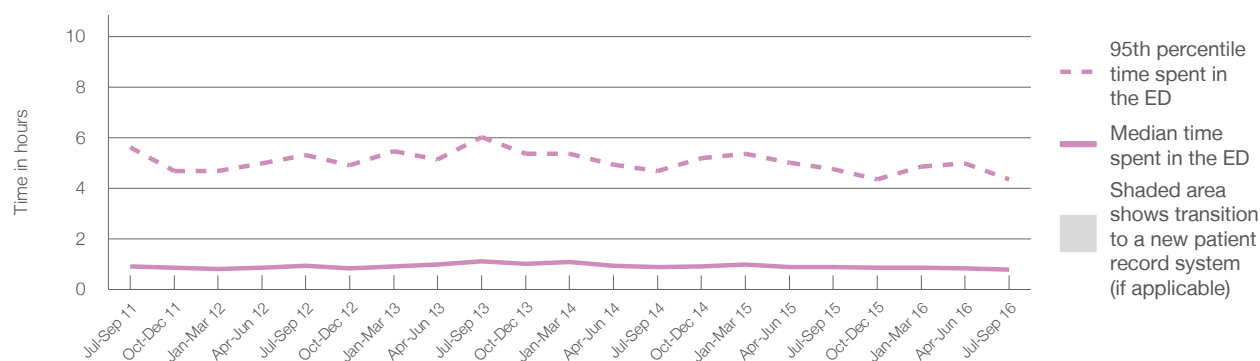
4 hours and 21 minutes

Same period last year	NSW (this period)
1,360	
1,360	
0 hours and 54 minutes	2 hours and 50 minutes
4 hours and 46 minutes	10 hours and 43 minutes

Percentage of patients who left the ED by time, July to September 2016



Time patients spent in the ED, by quarter, July 2011 to September 2016^{††}



	Jul-Sep 2011	Jul-Sep 2012	Jul-Sep 2013	Jul-Sep 2014	Jul-Sep 2015	Jul-Sep 2016
Median time to leaving the ED ⁸ (hours, minutes)	0h 55m	0h 57m	1h 7m	0h 54m	0h 54m	0h 47m
95th percentile time to leaving the ED ⁹ (hours, minutes)	5h 37m	5h 20m	6h 1m	4h 42m	4h 46m	4h 21m

(†) Data points are not shown in graphs for quarters when patient numbers are too small.

(‡) Caution is advised when interpreting abrupt changes over time at the hospital level. For example, performance before and after transition to a new information system is not directly comparable. For more information, see Background Paper: Approaches to reporting time measures of emergency department performance, December 2011.

Kurri Kurri District Hospital: Time patients spent in the ED

By mode of separation

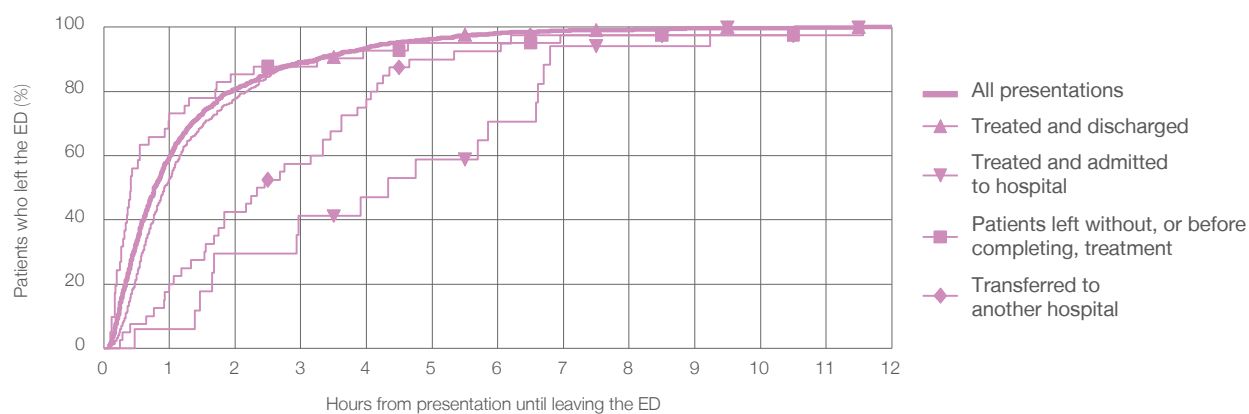
July to September 2016

All presentations:[†] 969 patients

Presentations used to calculate time to leaving the ED:[‡] 969 patients

		Same period last year	Change since one year ago
Treated and discharged	569 (58.7%)	1,360	-28.8%
Treated and admitted to hospital	17 (1.8%)	986	-42.3%
Patient left without, or before completing, treatment	41 (4.2%)	25	-32.0%
Transferred to another hospital	40 (4.1%)	54	-24.1%
Other	302 (31.2%)	64	-37.5%
		231	30.7%

Percentage of patients who left the ED by time and mode of separation, July to September 2016^{†‡}



1 hour 2 hours 3 hours 4 hours 6 hours 8 hours 10 hours 12 hours

Treated and discharged	52.9%	77.9%	88.6%	93.5%	98.6%	99.1%	100%	100%
Treated and admitted to hospital	5.9%	29.4%	41.2%	47.1%	70.6%	94.1%	100%	100%
Patient left without, or before completing, treatment	73.2%	85.4%	87.8%	92.7%	95.1%	97.6%	97.6%	100%
Transferred to another hospital	20.0%	42.5%	57.5%	77.5%	92.5%	97.5%	97.5%	100%
All presentations	59.9%	80.8%	89.2%	93.6%	98.1%	99.2%	99.8%	100%

(†) Data points are not shown in graphs for quarters when patient numbers are too small.

(‡) Caution is advised when interpreting abrupt changes over time at the hospital level. For example, performance before and after transition to a new information system is not directly comparable. For more information, see Background Paper: Approaches to reporting time measures of emergency department performance, December 2011.

Kurri Kurri District Hospital: Time spent in the ED

Percentage of patients who spent four hours or less in the ED

July to September 2016

All presentations at the emergency department: ¹ 969 patients

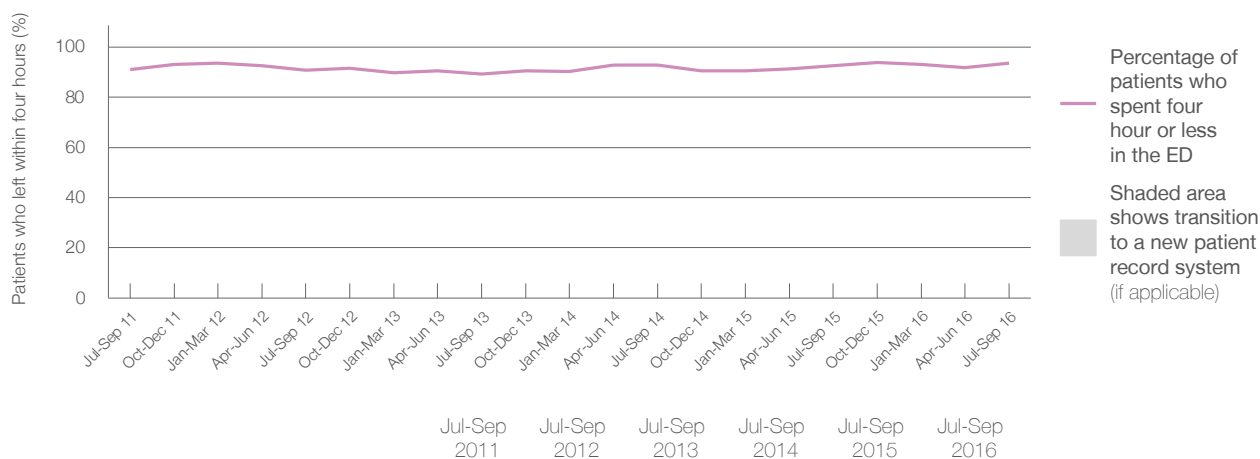
Presentations used to calculate time to leaving the ED: ⁶ 969 patients

Percentage of patients who spent four hours or less in the ED



Same period last year	Change since one year ago
1,360	-28.8%
1,360	-28.8%
92.6%	

Percentage of patients who spent four hours or less in the ED, by quarter, July 2011 to September 2016 ^{†‡}



Patients who left within four hours (%)	91.0%	90.8%	89.3%	92.8%	92.6%	93.6%
---	-------	-------	-------	-------	-------	-------

- * Suppressed due to small numbers and to protect privacy. Relevant graphs are also suppressed.
- † Data points are not shown in graphs for quarters when patient numbers were too small.
- ‡ Caution is advised when interpreting abrupt changes over time at the hospital level. For example, performance before and after transition to a new information system is not directly comparable. For more information see Background Paper: Approaches to reporting time measures of emergency department performance, December 2011.
1. All emergency and non-emergency presentations at the emergency department (ED).
 2. All presentations that have a triage category and are coded as emergency presentations or unplanned return visits.
 3. Some patients are excluded from ED time measures due to calculation requirements. For details, see the Technical Supplement: Emergency department measures, July to September 2016.
 4. The median is the time by which half of patients started treatment. The other half of patients took equal to or longer than this time.
 5. The 95th percentile is the time by which 95% of patients started treatment. The final 5% of patients took equal to or longer than this time.
 6. All presentations that have a departure time.
 7. Transfer of care time refers to the period between arrival of patients at the ED by ambulance and the transfer of responsibility for their care from paramedics to ED staff in an ED treatment zone. For more information see Spotlight on Measurement: measuring transfer of care from the ambulance to the emergency department.
 8. The median is the time by which half of patients left the ED. The other half of patients took equal to or longer than this time.
 9. The 95th percentile is the time by which 95% of patients left the ED. The final 5% of patients took equal to or longer than this time.
- Note:** Presentation time is the earlier of times recorded for the start of clerical registration or the triage process. Treatment time is the earliest time recorded when a healthcare professional provides medical care that is relevant to the patient's presenting problems. For patients who were treated and discharged, departure time is the time when treatment was completed. For all other patients, departure time is the time when the patient actually left the ED.
- Note:** All percentages are rounded and therefore percentages may not add to 100%.
- Sources:** ED data from Health Information Exchange, NSW Health (extracted 20 October 2016).
Transfer of care data from Transfer of Care Reporting System (extracted 20 October 2016).