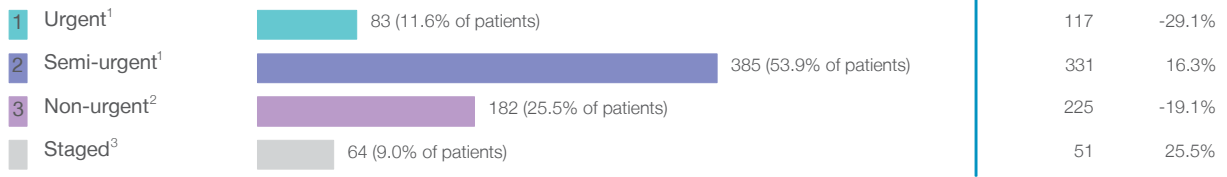


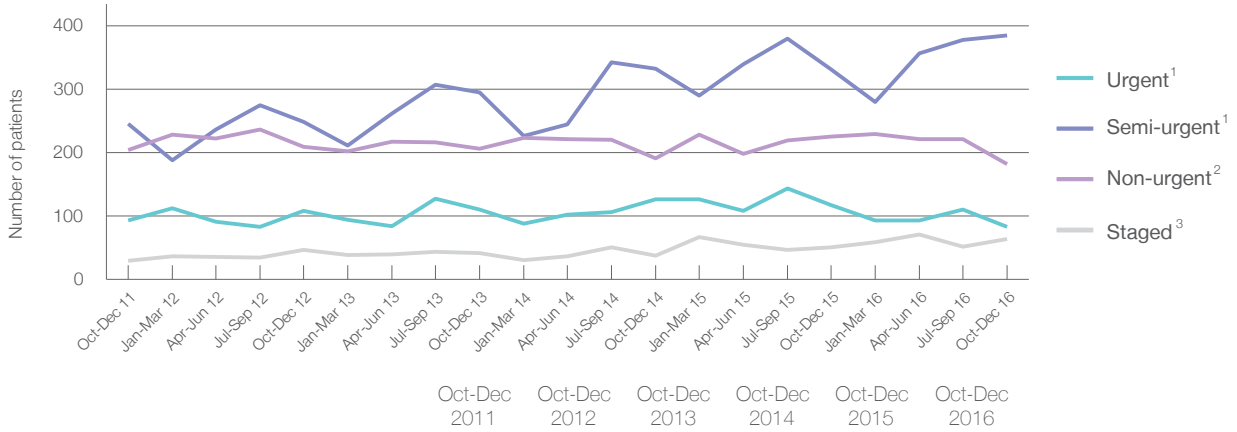
Belmont Hospital: Elective surgery performed

October to December 2016

Patients who received elective surgery by urgency category: 714 patients



Patients who received elective surgery by urgency category by quarter, October 2011 to December 2016



All categories	572	612	653	687	724	714
Urgent ¹	93	108	110	126	117	83
Semi-urgent ¹	245	248	295	332	331	385
Non-urgent ²	204	209	206	191	225	182
Staged ³	30	47	42	38	51	64

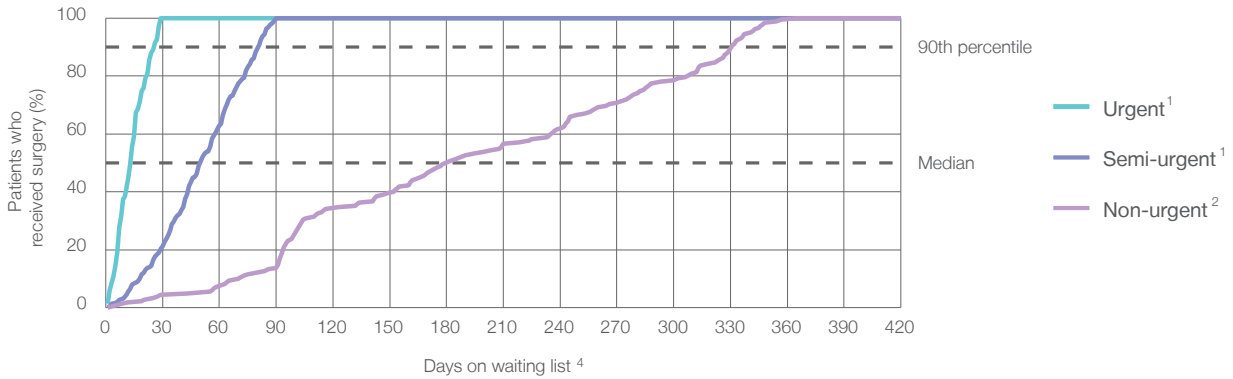
Belmont Hospital: Time waited to receive elective surgery

October to December 2016

Percentage of patients who received surgery within the clinically recommended timeframe

	Recommended:	100%	Same period last year	Peer group (this period)
1 Urgent ¹	30 days	100%	100%	99.8%
2 Semi-urgent ¹	90 days	100%	100%	99.4%
3 Non-urgent ²	365 days	100%	99.6%	98.7%

Percentage of patients who received elective surgery by waiting time (days)



Waiting time (days) for people who received surgery by urgency category

	Peer group (this period)	This hospital (same period last year)	Peer group (same period last year)
1 Urgent: ¹ 83 patients			
Median time to receive surgery	14 days	14	14
90th percentile time to receive surgery	*	27	26
2 Semi-urgent: ¹ 385 patients			
Median time to receive surgery	50 days	49	45
90th percentile time to receive surgery	81 days	81	82
3 Non-urgent: ² 182 patients			
Median time to receive surgery	182 days	242	259
90th percentile time to receive surgery	331 days	351	342

Belmont Hospital: Time waited to receive elective surgery

October to December 2016

Median ⁵ waiting time (days) for patients who received elective surgery by specialty of surgeon		Same period last year	Peer group (this period)
Cardiothoracic surgery	n/a (0 patients)	n/a	n/a
Ear, nose and throat surgery	42 days (30 patients)	127	65
General surgery	50 days (128 patients)	62	43
Gynaecology	56 days (108 patients)	50	41
Medical	n/a (0 patients)	n/a	15
Neurosurgery	n/a (0 patients)	n/a	n/a
Ophthalmology	n/a (0 patients)	n/a	261
Orthopaedic surgery	91 days (169 patients)	84	151
Plastic surgery	60 days (74 patients)	84	63
Urology	38 days (205 patients)	38	38
Vascular surgery	n/a (0 patients)	n/a	41

Median ⁵ waiting time (days) for patients who received elective surgery by common procedures ⁷		Same period last year	Peer group (this period)
Abdominal hysterectomy	* (< 5 patients)	*	75
Cataract extraction	n/a (0 patients)	n/a	263
Cholecystectomy	46 days (31 patients)	69	49
Coronary artery bypass graft	n/a (0 patients)	n/a	n/a
Cystoscopy	38 days (149 patients)	40	32
Haemorrhoidectomy	* (< 5 patients)	*	60
Hysteroscopy	45 days (36 patients)	41	29
Inguinal herniorrhaphy	72 days (29 patients)	88	62
Myringoplasty / Tympanoplasty	* (< 5 patients)	*	*
Myringotomy	n/a (0 patients)	n/a	*
Other - General	58 days (10 patients)	11	27
Prostatectomy	* (7 patients)	49	80
Septoplasty	* (5 patients)	*	295
Tonsillectomy	28 days (15 patients)	110	75
Total hip replacement	n/a (0 patients)	n/a	215
Total knee replacement	n/a (0 patients)	n/a	276
Varicose veins stripping and ligation	n/a (0 patients)	n/a	54

Belmont Hospital: Elective surgery waiting list

October to December 2016

Patients ready for surgery on waiting list at start of quarter: 896 patients

Patients ready for surgery on waiting list at end of quarter: 870 patients

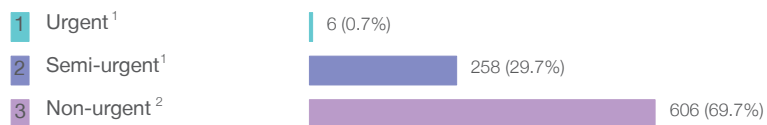
Patients not ready for surgery⁸ on waiting list at end of quarter: 203 patients

	Same period last year	Change since one year ago
Patients ready for surgery on waiting list at start of quarter	853	5.0%
Patients ready for surgery on waiting list at end of quarter	743	17.1%
Patients not ready for surgery ⁸ on waiting list at end of quarter	205	-1.0%

Belmont Hospital: Patients ready for elective surgery

as at 31st December 2016

Patients ready for surgery on waiting list by urgency category: 870 patients



	Same period last year	Change since one year ago
Urgent ¹	11	-45.5%
Semi-urgent ¹	201	28.4%
Non-urgent ²	531	14.1%

Belmont Hospital: Patients ready for elective surgery

as at 31st December 2016

Patients ready for elective surgery by specialty of surgeon: 870 patients

	As at 31 Dec 2016	Same time last year	Change since one year ago
All specialties	870	743	17.1%
Cardiothoracic surgery	0	0	n/a
Ear, nose and throat surgery	5	33	-84.8%
General surgery	171	162	5.6%
Gynaecology	150	124	21.0%
Medical	0	0	n/a
Neurosurgery	0	0	n/a
Ophthalmology	0	0	n/a
Orthopaedic surgery	432	291	48.5%
Plastic surgery	54	76	-28.9%
Urology	58	57	1.8%
Vascular surgery	0	0	n/a

Patients ready for elective surgery for common procedures ⁷

	As at 31 Dec 2016	Same time last year	Change since one year ago
Abdominal hysterectomy	< 5	< 5	*
Cataract extraction	0	< 5	n/a
Cholecystectomy	31	39	-20.5%
Coronary artery bypass graft	0	< 5	n/a
Cystoscopy	49	35	40.0%
Haemorrhoidectomy	< 5	< 5	*
Hysteroscopy	34	30	13.3%
Inguinal herniorrhaphy	53	68	-22.1%
Myringoplasty / Tympanoplasty	< 5	< 5	*
Myringotomy	0	< 5	n/a
Other - General	9	< 5	*
Prostatectomy	5	5	0.0%
Septoplasty	0	6	-100.0%
Tonsillectomy	< 5	14	*
Total hip replacement	0	< 5	n/a
Total knee replacement	0	< 5	n/a
Varicose veins stripping and ligation	0	< 5	n/a

Belmont Hospital: Patients ready for elective surgery

as at 31st December 2016

Patients ready for elective surgery, on the waiting list for longer than 12 months

	As at 31 Dec 2016	Same time last year
All specialties	0	0

* Suppressed due to small numbers and to protect privacy. Relevant graphs are also suppressed.

< 5 Less than five patients. For measures by urgency category, counts are included in an adjacent category. Relevant graphs are also suppressed.

1. Excluding staged procedures.
2. Excluding staged procedures and cystoscopy.
3. Including non-urgent cystoscopy.
4. Excludes the total number of days the patient was coded as 'not ready for surgery'.
5. This is the number of days it took for half of patients who received elective surgery during the period to be admitted and receive their surgery. The other half took equal to or longer than the median to be admitted for surgery.
6. This is the number of days it took for 90% of patients who received elective surgery during the period to be admitted and receive their surgery. The final 10% of patients took equal to or longer than the 90th percentile.
7. The procedures included in this list are procedures which are high volume; some may be associated with long waiting periods. For a description of these procedures see *Elective Surgery Glossary of Common Procedures, December 2012*.
8. Includes staged procedures, non-urgent cystoscopy, and patients currently not available for personal reasons.

For more information: For details of methods, see the *Technical Supplement: Elective surgery measures, July to September 2016*.

Note: All percentages rounded to whole numbers and therefore percentages may not add to 100%.

Source: Waiting List Collection On-Line System, NSW Health (extracted 20 January 2017.).