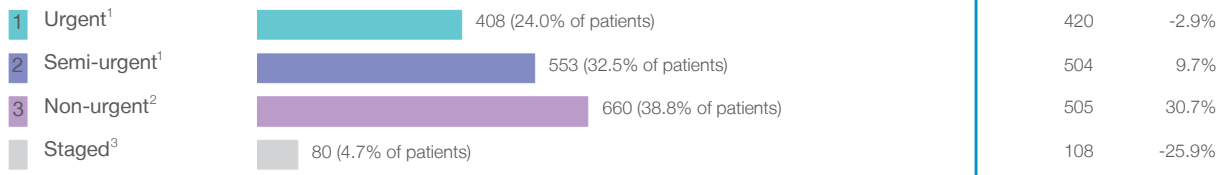


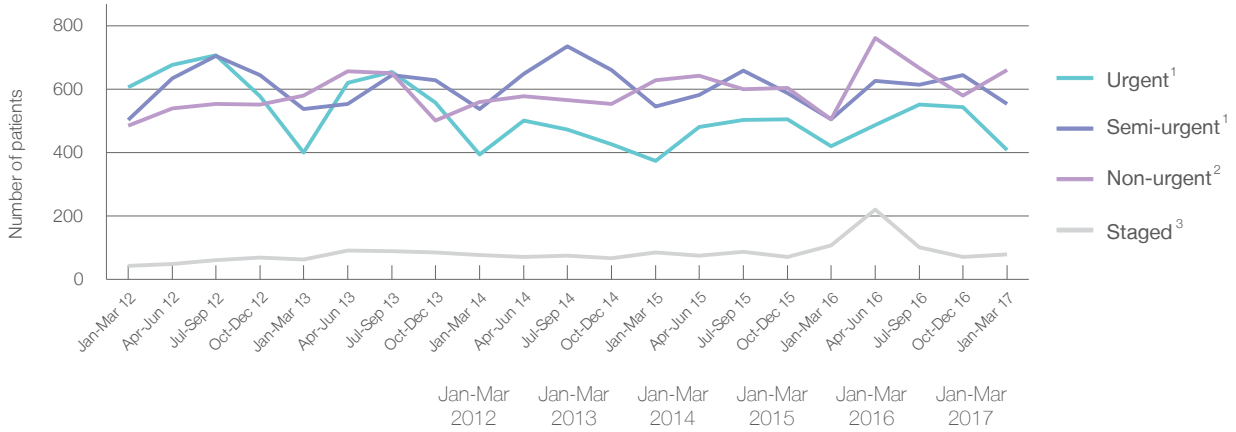
Liverpool Hospital: Elective surgery performed

January to March 2017

Patients who received elective surgery by urgency category: 1,701 patients



Patients who received elective surgery by urgency category by quarter, January 2012 to March 2017



	Jan-Mar 2012	Jan-Mar 2013	Jan-Mar 2014	Jan-Mar 2015	Jan-Mar 2016	Jan-Mar 2017
All categories	1,636	1,580	1,570	1,633	1,537	1,701
Urgent ¹	606	400	395	373	420	408
Semi-urgent ¹	503	537	538	546	504	553
Non-urgent ²	484	580	560	628	505	660
Staged ³	43	63	77	86	108	80

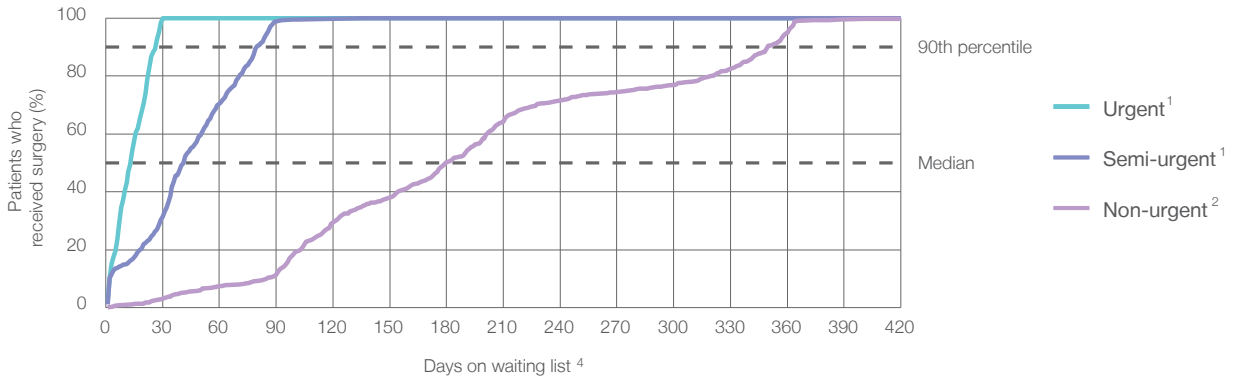
Liverpool Hospital: Time waited to receive elective surgery

January to March 2017

Percentage of patients who received surgery within the clinically recommended timeframe

Urgency Category	Recommended Timeframe	Percentage	Same period last year	Peer group (this period)
1 Urgent ¹	Recommended: 30 days	100%	100%	99.5%
2 Semi-urgent ¹	Recommended: 90 days	98.9%	97.8%	94.5%
3 Non-urgent ²	Recommended: 365 days	98.8%	98.6%	95.0%

Percentage of patients who received elective surgery by waiting time (days)



Waiting time (days) for people who received surgery by urgency category

Urgency Category	Number of Patients	Median time to receive surgery (days)	90th percentile time to receive surgery (days)	Peer group (this period)	This hospital (same period last year)	Peer group (same period last year)
1 Urgent ¹	408 patients	14 days	27 days	8	13	8
2 Semi-urgent ¹	553 patients	42 days	80 days	42	40	44
3 Non-urgent ²	660 patients	180 days	350 days	177	162	176

Liverpool Hospital: Time waited to receive elective surgery

January to March 2017

Specialty	Median ⁵ waiting time (days) for patients who received elective surgery by specialty of surgeon	Same period last year	Peer group (this period)
Cardiothoracic surgery	35 days (77 patients)	47	28
Ear, nose and throat surgery	216 days (109 patients)	117	158
General surgery	57 days (395 patients)	32	30
Gynaecology	39 days (255 patients)	34	32
Medical	* (< 5 patients)	*	22
Neurosurgery	92 days (108 patients)	85	56
Ophthalmology	190 days (208 patients)	160	126
Orthopaedic surgery	11 days (70 patients)	11	86
Plastic surgery	20 days (83 patients)	19	23
Urology	51 days (199 patients)	36	34
Vascular surgery	28 days (194 patients)	18	21

Procedure	Median ⁵ waiting time (days) for patients who received elective surgery by common procedures ⁷	Same period last year	Peer group (this period)
Abdominal hysterectomy	36 days (38 patients)	29	49
Cataract extraction	190 days (181 patients)	160	156
Cholecystectomy	58 days (43 patients)	85	42
Coronary artery bypass graft	71 days (22 patients)	72	42
Cystoscopy	36 days (60 patients)	28	29
Haemorrhoidectomy	111 days (13 patients)	*	90
Hysteroscopy	27 days (105 patients)	22	34
Inguinal herniorrhaphy	108 days (45 patients)	103	69
Myringoplasty / Tympanoplasty	* (< 5 patients)	*	269
Myringotomy	n/a (0 patients)	n/a	88
Other - General	29 days (44 patients)	20	22
Prostatectomy	83 days (20 patients)	22	69
Septoplasty	342 days (10 patients)	*	337
Tonsillectomy	336 days (29 patients)	258	333
Total hip replacement	* (5 patients)	*	102
Total knee replacement	n/a (0 patients)	*	249
Varicose veins stripping and ligation	n/a (0 patients)	n/a	111

Liverpool Hospital: Elective surgery waiting list

January to March 2017

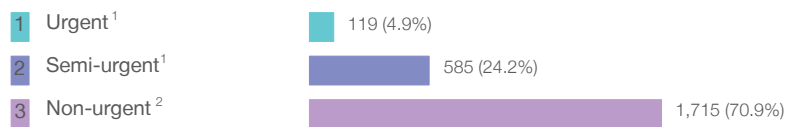
Patients ready for surgery on waiting list at start of quarter: 2,183 patients
 Patients ready for surgery on waiting list at end of quarter: 2,419 patients
 Patients not ready for surgery⁸ on waiting list at end of quarter: 587 patients

Same period last year	Change since one year ago
1,770	23.3%
1,920	26.0%
672	-12.6%

Liverpool Hospital: Patients ready for elective surgery

as at 31st March 2017

Patients ready for surgery on waiting list by urgency category: 2,419 patients



Same period last year	Change since one year ago
80	48.8%
445	31.5%
1,395	22.9%

Liverpool Hospital: Patients ready for elective surgery as at 31st March 2017

Patients ready for elective surgery by specialty of surgeon: 2,419 patients

	As at 31 Mar 2017	Same time last year	Change since one year ago
All specialties	2,419	1,920	26.0%
Cardiothoracic surgery	53	35	51.4%
Ear, nose and throat surgery	457	372	22.8%
General surgery	694	550	26.2%
Gynaecology	261	231	13.0%
Medical	0	< 5	*
Neurosurgery	177	210	-15.7%
Ophthalmology	394	298	32.2%
Orthopaedic surgery	40	24	66.7%
Plastic surgery	69	56	23.2%
Urology	205	86	138.4%
Vascular surgery	69	56	23.2%

Patients ready for elective surgery for common procedures⁷

	As at 31 Mar 2017	Same time last year	Change since one year ago
Abdominal hysterectomy	38	41	-7.3%
Cataract extraction	319	247	29.1%
Cholecystectomy	119	91	30.8%
Coronary artery bypass graft	21	17	23.5%
Cystoscopy	30	5	500.0%
Haemorrhoidectomy	16	14	14.3%
Hysteroscopy	72	56	28.6%
Inguinal herniorrhaphy	82	79	3.8%
Myringoplasty / Tympanoplasty	34	26	30.8%
Myringotomy	8	13	-38.5%
Other - General	40	40	0.0%
Prostatectomy	39	12	225.0%
Septoplasty	42	41	2.4%
Tonsillectomy	193	139	38.8%
Total hip replacement	< 5	< 5	*
Total knee replacement	< 5	< 5	n/a
Varicose veins stripping and ligation	0	< 5	n/a

Liverpool Hospital: Patients ready for elective surgery as at 31st March 2017

Patients ready for elective surgery, on the waiting list for longer than 12 months

As at 31 Mar 2017 Same time last year

	As at 31 Mar 2017	Same time last year
All specialties	16	< 5

* Suppressed due to small numbers and to protect privacy. Relevant graphs are also suppressed.

< 5 Less than five patients. For measures by urgency category, counts are included in an adjacent category. Relevant graphs are also suppressed.

1. Excluding staged procedures.
2. Excluding staged procedures and cystoscopy.
3. Including non-urgent cystoscopy.
4. Excludes the total number of days the patient was coded as 'not ready for surgery'.
5. This is the number of days it took for half of patients who received elective surgery during the period to be admitted and receive their surgery. The other half took equal to or longer than the median to be admitted for surgery.
6. This is the number of days it took for 90% of patients who received elective surgery during the period to be admitted and receive their surgery. The final 10% of patients took equal to or longer than the 90th percentile.
7. The procedures included in this list are procedures which are high volume; some may be associated with long waiting periods. For a description of these procedures see *Elective Surgery Glossary of Common Procedures, December 2012*.
8. Includes staged procedures, non-urgent cystoscopy, and patients currently not available for personal reasons.

For more information: For details of methods, see the *Technical Supplement: Elective surgery measures, July to September 2016*.

Note: All percentages rounded to whole numbers and therefore percentages may not add to 100%.

Source: Waiting List Collection On-Line System, NSW Health (extracted 18 April 2017.).