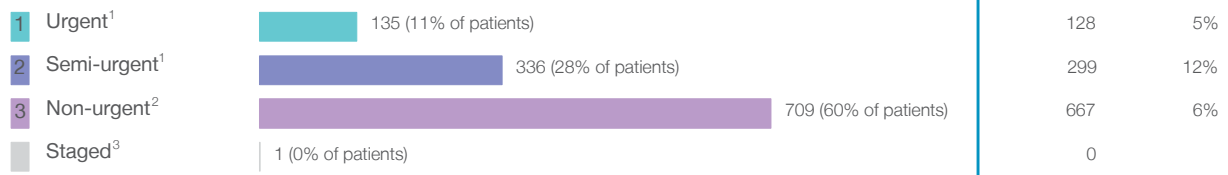


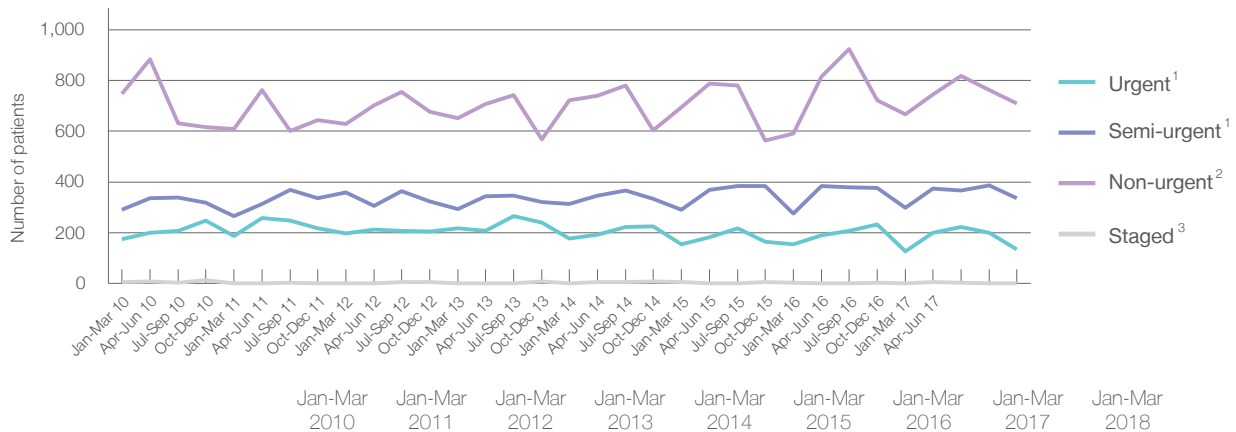
Sydney Hospital and Sydney Eye Hospital: Elective surgery performed

January to March 2018

Patients who received elective surgery by urgency category: 1,181 patients



Patients who received elective surgery by urgency category by quarter, January 2013 to March 2018



All categories	1,222	1,064	1,185	1,163	1,215	1,148	1,025	1,094	1,181
Urgent ¹	176	188	198	217	178	156	156	128	135
Semi-urgent ¹	292	266	359	293	313	292	275	299	336
Non-urgent ²	748	609	628	652	722	695	590	667	709
Staged ³	6	1	0	1	2	5	4	0	1

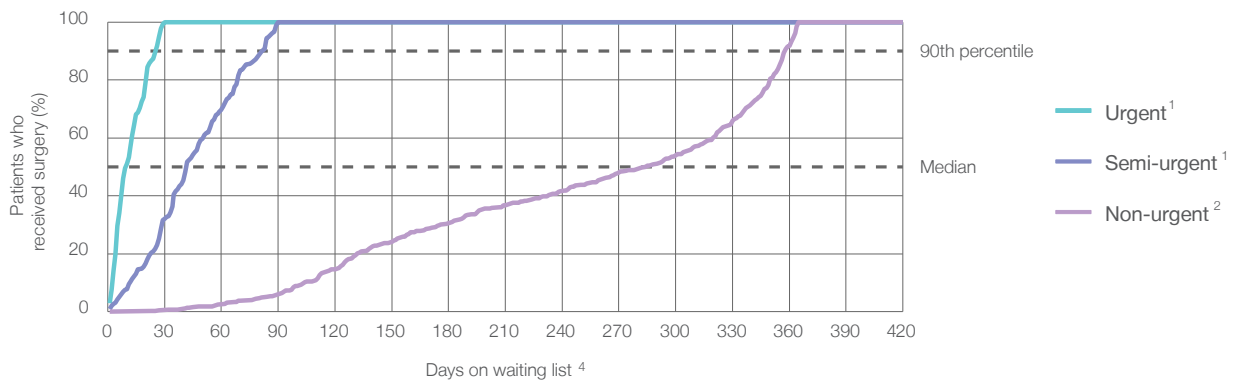
Sydney Hospital and Sydney Eye Hospital: Time waited to receive elective surgery

January to March 2018

Percentage of patients who received surgery within the clinically recommended timeframe

			Same period last year	Peer group (this period)
1 Urgent ¹	Recommended: 30 days	100%	100%	100%
2 Semi-urgent ¹	Recommended: 90 days	100%	100%	100%
3 Non-urgent ²	Recommended: 365 days	100%	100%	100%

Percentage of patients who received elective surgery by waiting time (days)








Waiting time (days) for people who received surgery by urgency category

		Peer group (this period)	This hospital (same period last year)	Peer group (same period last year)
1 Urgent: ¹ 135 patients				
Median time to receive surgery	10 days	11	10	10
90th percentile time to receive surgery	26 days	25	25	26
2 Semi-urgent: ¹ 336 patients				
Median time to receive surgery	42 days	44	55	49
90th percentile time to receive surgery	82 days	79	84	84
3 Non-urgent: ² 709 patients				
Median time to receive surgery	284 days	256	290	270
90th percentile time to receive surgery	358 days	357	355	353

Sydney Hospital and Sydney Eye Hospital: Time waited to receive elective surgery

January to March 2018

Median ⁵ waiting time (days) for patients who received elective surgery by specialty of surgeon		Same period last year	Peer group (this period)
Cardiothoracic surgery	n/a (0 patients)	n/a	*
Ear, nose and throat surgery	 354 days (31 patients)	315	354
General surgery	n/a (0 patients)	n/a	24
Gynaecology	n/a (0 patients)	n/a	34
Medical	n/a (0 patients)	n/a	*
Neurosurgery	n/a (0 patients)	n/a	n/a
Ophthalmology	 125 days (995 patients)	148	125
Orthopaedic surgery	 80 days (155 patients)	72	80
Plastic surgery	n/a (0 patients)	n/a	27
Urology	n/a (0 patients)	n/a	n/a
Vascular surgery	n/a (0 patients)	n/a	n/a

Median ⁵ waiting time (days) for patients who received elective surgery by common procedures ⁷		Same period last year	Peer group (this period)
Abdominal hysterectomy	n/a (0 patients)	n/a	15
Cataract extraction	 265 days (531 patients)	240	265
Cholecystectomy	n/a (0 patients)	n/a	76
Coronary artery bypass graft	n/a (0 patients)	n/a	n/a
Cystoscopy	n/a (0 patients)	n/a	*
Haemorrhoidectomy	n/a (0 patients)	n/a	*
Hysteroscopy	n/a (0 patients)	n/a	36
Inguinal herniorrhaphy	n/a (0 patients)	n/a	75
Myringoplasty / Tympanoplasty	n/a (0 patients)	n/a	n/a
Myringotomy	n/a (0 patients)	n/a	n/a
Other - General	n/a (0 patients)	n/a	21
Prostatectomy	n/a (0 patients)	n/a	n/a
Septoplasty	 358 days (12 patients)	337	358
Tonsillectomy	* (5 patients)	*	*
Total hip replacement	n/a (0 patients)	n/a	n/a
Total knee replacement	n/a (0 patients)	n/a	n/a
Varicose veins stripping and ligation	n/a (0 patients)	n/a	n/a

Sydney Hospital and Sydney Eye Hospital: Elective surgery waiting list

January to March 2018

	Same period last year	Change since one year ago
Patients ready for surgery on waiting list at start of quarter: 2,831 patients	2,574	10%
Patients ready for surgery on waiting list at end of quarter: 2,761 patients	2,406	15%
Patients not ready for surgery ⁸ on waiting list at end of quarter: 260 patients	197	32%

Sydney Hospital and Sydney Eye Hospital: Patients ready for elective surgery

as at 31st March 2018

Patients ready for surgery on waiting list by urgency category: 2,761 patients

		Same period last year	Change since one year ago
1 Urgent ¹	24 (0.9%)	31	-23%
2 Semi-urgent ¹	304 (11.0%)	234	30%
3 Non-urgent ²	2,433 (88.1%)	2,141	14%

Sydney Hospital and Sydney Eye Hospital: Patients ready for elective surgery as at 31st March 2018

Patients ready for elective surgery by specialty of surgeon: 2,761 patients

	As at 31 Mar 2018	Same time last year	Change since one year ago
All specialties	2,761	2,406	15%
Cardiothoracic surgery	0	0	n/a
Ear, nose and throat surgery	45	50	-10%
General surgery	0	0	n/a
Gynaecology	0	0	n/a
Medical	0	0	n/a
Neurosurgery	0	0	n/a
Ophthalmology	2,300	2,090	10%
Orthopaedic surgery	416	266	56%
Plastic surgery	0	0	n/a
Urology	0	0	n/a
Vascular surgery	0	0	n/a

Patients ready for elective surgery for common procedures ⁷

	As at 31 Mar 2018	Same time last year	Change since one year ago
Abdominal hysterectomy	0	< 5	n/a
Cataract extraction	1,764	1,525	16%
Cholecystectomy	0	< 5	n/a
Coronary artery bypass graft	0	< 5	n/a
Cystoscopy	0	< 5	n/a
Haemorrhoidectomy	0	< 5	n/a
Hysteroscopy	0	< 5	n/a
Inguinal herniorrhaphy	0	< 5	n/a
Myringoplasty / Tympanoplasty	< 5	7	*
Myringotomy	0	< 5	n/a
Other - General	0	< 5	n/a
Prostatectomy	0	< 5	n/a
Septoplasty	13	16	-19%
Tonsillectomy	10	7	43%
Total hip replacement	0	< 5	n/a
Total knee replacement	0	< 5	n/a
Varicose veins stripping and ligation	0	< 5	n/a

Sydney Hospital and Sydney Eye Hospital: Patients ready for elective surgery as at 31st March 2018

Patients ready for elective surgery, on the waiting list for longer than 12 months

	As at 31 Mar 2018	Same time last year
All specialties	0	0

- * Suppressed due to small numbers and to protect privacy. Relevant graphs are also suppressed.
- < 5 Less than five patients. For measures by urgency category, counts are included in an adjacent category. Relevant graphs are also suppressed.
1. Excluding staged procedures.
 2. Excluding staged procedures and cystoscopy.
 3. Including non-urgent cystoscopy.
 4. Excludes the total number of days the patient was coded as 'not ready for surgery'.
 5. This is the number of days it took for half of patients who received elective surgery during the period to be admitted and receive their surgery. The other half took equal to or longer than the median to be admitted for surgery.
 6. This is the number of days it took for 90% of patients who received elective surgery during the period to be admitted and receive their surgery. The final 10% of patients took equal to or longer than the 90th percentile.
 7. The procedures included in this list are procedures which are high volume; some may be associated with long waiting periods. For a description of these procedures see *Elective Surgery Glossary of Common Procedures, December 2012*.
 8. Includes staged procedures, non-urgent cystoscopy, and patients currently not available for personal reasons.
- For more information: For details of methods, see the *Technical Supplement: Elective surgery measures, January to March 2018*.
- Note:** All percentages rounded to whole numbers and therefore percentages may not add to 100%.
- Source:** Waiting List Collection On-Line System, NSW Health (extracted 13 April 2018.).